

Keysight M9168C/68E/69E PXI Programmable Step Attenuator Module

Startup and
Service Guide



NOTICE: This document contains references to Agilent Technologies. Agilent's former Test and Measurement business has become Keysight Technologies. For more information, go to www.keysight.com.



Notices

© Keysight Technologies 2011 - 2015

No part of this manual may be reproduced in any form or by any means (including electronic storage and retrieval or translation into a foreign language) without prior agreement and written consent from Keysight Technologies as governed by United States and international copyright laws.

Manual Part Number

M9168-90001

Edition

Edition 3, March 2015

Printed in Malaysia

Published by Keysight Technologies

Keysight Technologies Sdn. Bhd.

Phase 3 Bayan Lepas Free Industrial Zone
Bayan Lepas, Penang 11900 Malaysia

Sales and Technical Support

To contact Keysight for sales and technical support, refer to the "support" links on the following Keysight Web resources:

- www.keysight.com/find/PXlattenuator (product-specific information and support, software and documentation updates)
- www.keysight.com/find/assist (worldwide contact information for repair and service)

Information on preventing damage to your Keysight equipment can be found at www.keysight.com/find/tips.

Trademark Acknowledgements

Microsoft, Windows, Windows Vista, and DirectX are trademarks or registered trademarks of Microsoft Corporation.

Itanium is a trademark or registered trademark of Intel Corporation.

Warranty

The material contained in this document is provided "as is," and is subject to being changed, without notice, in future editions. Further, to the maximum extent permitted by applicable law, Keysight disclaims all warranties, either express or implied, with regard to this manual and any information contained herein, including but not limited to the implied warranties of merchantability and fitness for a particular purpose. Keysight shall not be liable for errors or for incidental or consequential damages in connection with the furnishing, use, or performance of this document or of any information contained herein. Should Keysight and the user have a separate written agreement with warranty terms covering the material in this document that conflict with these terms, the warranty terms in the separate agreement shall control.

Technology Licenses

The hardware and/or software described in this document are furnished under a license and may be used or copied only in accordance with the terms of such license.

Restricted Rights Legend

If Software is for use in the performance of a U.S. Government prime contract or sub-contract, Software is delivered and licensed as "Commercial computer software" as defined in DFAR 252.227-7014 (June 1995), or as a "commercial item" as defined in FAR 2.101(a) or as "Restricted computer software" as defined in FAR 52.227-19 (June 1987) or any equivalent agency regulation or contract clause. Use, duplication, or disclosure of Software is subject to Keysight Technologies' standard commercial license terms, and non-DOD Departments and Agencies of the U.S. Government will receive no greater than Restricted Rights as defined in FAR 52.227-19(c)(1-2) (June 1987). U.S. Government users will receive no greater than Limited Rights as defined in FAR 52.227-14 (June 1987) or DFAR 252.227-7015(b)(2) (November 1995), as applicable in any technical data.

Regulatory Compliance

This product has been designed and tested in accordance with accepted industry standards, and has been supplied in a safe condition. To review the Declaration of Conformity, go to

<http://regulations.products.keysight.com/DoC/search.htm>.

Safety Notices

CAUTION

A **CAUTION** notice denotes a hazard. It calls attention to an operating procedure, practice, or the like that, if not correctly performed or adhered to, could result in damage to the product or loss of important data. Do not proceed beyond a **CAUTION** notice until the indicated conditions are fully understood and met.

WARNING

A **WARNING** notice denotes a hazard. It calls attention to an operating procedure, practice, or the like that, if not correctly performed or adhered to, could result in personal injury or death. Do not proceed beyond a **WARNING** notice until the indicated conditions are fully understood and met.

General Safety Information

The following safety precautions should be observed before using this product and any associated instrumentation.

This product is intended for use by qualified personnel who recognize shock hazards and are familiar with the safety precautions required to avoid any possible injury. Read and follow all installation, operation, and maintenance information carefully before using this product. Refer to the user documentation for complete product specifications.

WARNING

If this product is not used as specified, the protection provided by the equipment could be impaired. This product must be used in a normal condition (in which all means for protection are intact) only.

The types of product users are:

- **Responsible body** who is the individual or group responsible for the use and maintenance of equipment, for ensuring that the equipment is operated within its specifications and operating limits, and for ensuring that operators are adequately trained.
- **Operators** who use the product for its intended function. They must be trained in electrical safety procedures and proper use of the instrument. They must be protected from electric shock and contact with hazardous live circuits.
- **Maintenance personnel** who perform routine procedures on the product to keep it operating properly (for example, setting the line voltage or replacing consumable materials). Maintenance procedures are described in the user documentation. The procedures explicitly state if the operator may perform them. Otherwise, they should be performed only by service personnel.
- **Service personnel** who are trained to work on live circuits, perform safe installations, and repair products. Only properly trained service personnel may perform installation and service procedures.

Keysight products are designed for use with electrical signals that are rated Measurement Category I and Measurement Category II, as described in the International Electrotechnical Commission (IEC) Standard IEC 60664. Most measurement, control, and data I/O signals are rated Measurement Category I and must not be directly connected to mains

voltage or to voltage sources with high transient over-voltages. Measurement Category II connections require protection for high transient over-voltages often associated with local AC mains connections. Assume all measurement, control, and data I/O connections are for connection to Category I sources unless otherwise marked or described in the user documentation.

Exercise extreme caution when a shock hazard is present. Lethal voltage may be present on cable connector jacks or test fixtures. The American National Standards Institute (ANSI) states that a shock hazard exists when voltage levels greater than 30 Vrms, 42.4 Vpeak, or 60 VDC are present. A good safety practice is to expect that hazardous voltage is present in any unknown circuit before measuring.

Operators of this product must be protected from electric shock at all times. The responsible body must ensure that operators are prevented access and/or insulated from every connection point. In some cases, connections must be exposed to potential human contact. Product operators in these circumstances must be trained to protect themselves from the risk of electric shock. If the circuit is capable of operating at or above 1000 V, no conductive part of the circuit may be exposed.

Do not connect switching cards directly to unlimited power circuits. They are intended to be used with impedance-limited sources. NEVER connect switching cards directly to AC mains. When connecting sources to switching cards, install protective devices to limit fault current and voltage to the card.

Before operating an instrument, ensure that the line cord is connected to a properly-grounded power receptacle. Inspect the connecting cables, test leads, and jumpers for possible wear, cracks, or breaks before each use.

When installing equipment where access to the main power cord is restricted, such as rack mounting, a separate main input power disconnect device must be provided in close proximity to the equipment and within easy reach of the operator.

For maximum safety, do not touch the product, test cables, or any other instruments while power is applied to the circuit-under-test. ALWAYS remove power from the entire test system and discharge any capacitors before connecting or disconnecting cables or jumpers, installing or removing switching cards, or making internal changes, such as installing or removing jumpers.

Do not touch any object that could provide a current path to the common side of the circuit-under-test or power line (earth) ground. Always make measurements with dry hands while standing on a dry, insulated surface capable of withstanding the voltage being measured.

The instrument and accessories must be used in accordance with its specifications and operating instructions, or the safety of the equipment may be impaired.

Do not exceed the maximum signal levels of the instruments and accessories, as defined in the specifications and operating information, and as shown on the instrument or test fixture panels, or switching card.

When fuses are used in a product, replace with the same type and rating for continued protection against fire hazard.

Chassis connections must only be used as shield connections for measuring circuits, NOT as safety earth ground connections.

If you are using a test fixture, keep the lid closed while power is applied to the device-under-test. Safe operation requires the use of a lid interlock.

Instrumentation and accessories shall not be connected to humans.






Before performing any maintenance, disconnect the line cord and all test cables.

To maintain protection from electric shock and fire, replacement components in mains circuits – including the power transformer, test leads, and input jacks – must be purchased from Keysight. Standard fuses with applicable national safety approvals may be used if the rating and type are the same. Other components that are not safety-related may be purchased from other suppliers as long as they are equivalent to the original component (note that selected parts should be purchased only through Keysight to maintain accuracy and functionality of the product). If you are unsure about the applicability of a replacement component, call a Keysight office for information.

WARNING

No operator serviceable parts inside. Refer servicing to qualified personnel. To prevent electric shock, do not remove covers.

Front and Rear Panel Symbols

	<p>The CE mark shows that the product complies with all the relevant European Legal Directives.</p>
<p>ISM GRP.1 CLASS A</p>	<p>This symbol indicates that this is an Industrial Scientific and Medical Group 1 Class A product.</p>
<p>ICES/NMB-001</p>	<p>ICES/NMB-001 indicates that this ISM device complies with Canadian ICES-001. Cet appareil ISM est conforme a la norme NMB-001 du Canada.</p>
	<p>The C-Tick mark is a registered trademark of the Spectrum Management Agency of Australia. This signifies compliance with the Australian EMC Framework Regulations under the terms of the Radio Communications Act of 1992.</p>
	<p>This symbol indicates separate collection for electrical and electronic equipment, mandated under EU law as of August 13, 2005. All electrical and electronic equipment are required to be separated from normal waste for disposal (Reference WEEE Directive, 2002/96/EC).</p>
	<p>This symbol indicates the time period during which no hazardous or toxic substance elements are expected to leak or deteriorate during normal use. Forty years is the expected useful life of the product.</p>
	<p>This symbol indicates that PXI is a U.S. registered trademark of the PXI System Alliance.</p>

Cleaning Precautions

WARNING

To prevent electric shock, disconnect the instrument from mains before cleaning. Use a dry cloth or one slightly dampened with water to clean the external case parts. Do not attempt to clean internally. To clean the connectors, use alcohol in a well-ventilated area. Allow all residual alcohol moisture to evaporate, and the fumes to dissipate prior to energizing the instrument.

This page is intentionally left blank.

Contents

1	Getting Started	
	Introduction	2
	Related documentation	2
	Step 1: Unpack and Inspect the M9168C/68E/69E	3
	ESD	3
	Inspect for damage	4
	Return for service	4
	Step 2: Verify M9168C/68E/69E Shipment Contents	6
	Step 3: Install the Software	7
	System requirements	7
	Power up the controller	8
	Install the software	8
	Step 4: Install the Module	10
	Step 5: Verify the M9168C/68E/69E Operation	13
2	Service and Maintenance	
	Service	20
	Maintenance	20
	Clean the connectors	20
	Make good connections	22

This page is intentionally left blank.

List of Figures

- Figure 1-1 Keysight Connection Expert interface 13
- Figure 1-2 Launching the SFP from the Keysight Connection Expert 14
- Figure 1-3 M9168C SFP verification 15
- Figure 1-4 M9168E SFP verification 16
- Figure 1-5 M9169E SFP verification 17
- Figure 2-1 Wrench positions 23
- Figure 2-2 Using the torque wrench 24

This page is intentionally left blank.

M9168C/68E/69E PXI Programmable Step Attenuator Module Startup and Service Guide

1 Getting Started

Introduction 2

Related documentation 2

Step 1: Unpack and Inspect the M9168C/68E/69E 3

Step 1: Unpack and Inspect the M9168C/68E/69E 3

ESD 3

Inspect for damage 4

Return for service 4

Step 2: Verify M9168C/68E/69E Shipment Contents 6

Step 3: Install the Software 7

System requirements 7

Power up the controller 8

Install the software 8

Step 4: Install the Module 10

Step 5: Verify the M9168C/68E/69E Operation 13

Introduction

The scope of this Startup and Service Guide is to detail the processes of receiving and installing the Keysight M9168C/68E/69E PXI Programmable Step Attenuator Module, installing the required software, and verifying basic module operations. If you have any inquiries after reviewing these information, contact your local Keysight Technologies representative or contact us through our Web site at <http://www.keysight.com/find/PXIattenuator>.

Related documentation

This Startup and Service Guide, and the documentation listed below, can be found on the product CD that is shipped with the product. They are also available at <http://www.keysight.com/find/PXIattenuator>.

- Help system for the Keysight M9168C/68E/69E PXI Programmable Step Attenuator Module Soft Front Panel
- Help systems for the Keysight M9168C/68E/69E PXI Programmable Step Attenuator Module device drivers (IVI-C and IVI-COM, and LabVIEW G)
- Keysight M9168C/68E/69E PXI Programmable Step Attenuator Module Specifications

Step 1: Unpack and Inspect the M9168C/68E/69E

CAUTION

The M9168C/68E/69E is shipped in materials that prevent static damage to the module. The module should only be removed from the packaging in an anti-static area ensuring that correct anti-static precautions are taken. Store all modules in anti-static envelopes when not in use.

ESD

Electrostatic discharge (ESD) can damage or destroy electronic components. All work on electronic assemblies should be performed at a static-safe work station.

Two types of ESD protection are listed below. Purchase acceptable ESD accessories from your local supplier.

- Conductive table-mat and wrist-strap combination
- Conductive floor-mat and heel-strap combination

Both types, when used together, provide a significant level of ESD protection. Of the two, only the table-mat and wrist-strap combination provides adequate ESD protection when used alone. To ensure user safety, static-safe accessories must provide at least 1 M Ω of isolation from ground.

WARNING

These techniques for a static-safe work station should not be used when working on circuitry with a voltage potential greater than 500 volts.

Inspect for damage

After unpacking the M9168C/68E/69E, carefully inspect the module for any shipping damage. Report any damage to the shipping agent immediately, as such damage is not covered by the warranty (warranty information can be found at the beginning of this manual).

CAUTION

To avoid damage when handling a module, do not touch the exposed connector pins.

NOTE

Information on preventing damage to your Keysight equipment can be found at www.keysight.com/find/tips.

Return for service

Should it become necessary to return the M9168C/68E/69E for repair or service, follow these steps:

- 1 Review the warranty information shipped with your module.
- 2 Contact Keysight to obtain a Return Material Authorization (RMA) and return address. If you need assistance in finding Keysight contact information, go to www.keysight.com/find/assist (worldwide contact information for repair and service) or refer to the Support information on the product Web page at www.keysight.com/find/PXIattenuator.
- 3 Write the following information on a tag and attach it to the malfunctioning module.
 - Name and address of owner. A P.O. box is not acceptable as a return address.
 - Product model number (for example, M9168C/68E/69E)

- Product serial number (for example, MYXXXXXXXXX). The serial number label is located on the side panel of the module. The serial number can also be viewed from the Soft Front Panel interface, but only after the software is installed.
 - Description of failure or service required
- 4 Carefully pack the module in its original ESD bag and packing carton. If the original carton is not available, use bubble wrap or packing peanuts and place the module in a sealed container and mark the container as "FRAGILE".
 - 5 On the shipping label, write ATTENTION REPAIR DEPARTMENT and the RMA number.

NOTE

If any correspondence is required, refer to the product by serial number and model number.

Step 2: Verify M9168C/68E/69E Shipment Contents

The following items are included with your M9168C/68E/69E order:

- Keysight M9168C/68E/69E Product Software and Information CD (M9168-10001), which contains software, drivers, and printed product documentation in the PDF format
- Keysight IO Libraries Suite CD (E2094-60003)
- Test data CD:
 - M9168C: Test data CD (M9168-10002)
 - M9168E: Test data CD (M9168-90004)
 - M9169E: Test data CD (M9169-90006)
- This manual (M9168C/68E/69E Startup and Service Guide) in hard copy
- Certificate of Calibration

Step 3: Install the Software

System requirements

Prior to any installation or configuration, ensure that the following system requirements are met:

Operating system	Windows [®] XP SP3 or later (32-bit)	Windows Vista [®] SP1 and SP2 (32-bit and 64-bit), Business, Ultimate, Enterprise, Home Basic, and Home Premium	Windows [®] 7 (32-bit and 64-bit) Starter, Home Basic, Home Premium, Professional, Ultimate, Enterprise
Processor speed	600 MHz or higher required, 800 MHz recommended	1 GHz 32-bit (x86), 1 GHz 64-bit (x64), no support for Itanium [®] 64	1 GHz 32-bit (x86), 1 GHz 64-bit (x64), no support for Itanium [®] 64
Available memory	256 MB minimum (1 GB or higher recommended)	1 GB minimum	1 GB minimum
Available hard-disk space^[1]	1.5 GB, includes: <ul style="list-style-type: none"> • 1 GB for Microsoft[®] .NET Framework 3.5 SP1^[2] • 65 MB for Keysight IO Libraries Suite^[3] 	1.5 GB, includes: <ul style="list-style-type: none"> • 1 GB for Microsoft[®] .NET Framework 3.5 SP1^[2] • 65 MB for Keysight IO Libraries Suite^[3] 	1.5 GB, includes: <ul style="list-style-type: none"> • 1 GB for Microsoft[®] .NET Framework 3.5 SP1^[2] • 65 MB for Keysight IO Libraries Suite^[3]
Video	Super VGA (800×600) 256 colors or more	Support for DirectX [®] 9 graphics with 128 MB graphics memory recommended (Super VGA graphics supported)	Support for DirectX [®] 9 graphics with 128 MB graphics memory recommended (Super VGA graphics supported)
Browser	Microsoft [®] Internet Explorer 6.0 or higher	Microsoft [®] Internet Explorer 7 or higher	Microsoft [®] Internet Explorer 7 or higher

[1] Because of the installation procedure, less disk space may be required for operation than is required for installation.

[2] .NET Framework Runtime Components are installed by default with Windows Vista and Windows 7. Therefore, you may not need this amount of available disk space.

[3] Version 16.0 (or later) of the Keysight IO Libraries Suite is required.

Power up the controller

If you are using a remote controller, install the cable interface and then power up the host PC. If you are using a Keysight M9021A cable interface, refer to the Keysight M9021A documentation for further details.

CAUTION

If you are using a remote controller, you must power up the chassis **BEFORE** you power up the PC.

When you power down your system, shut down the PC **BEFORE** you power down the chassis.

If you are using an embedded controller, complete the following steps:

- 1 Install the embedded controller module into a compatible chassis. The Keysight M9018A PXIe chassis is recommended. Refer to the Keysight M9018A documentation for further details.
- 2 Connect peripherals (mouse, keyboard, monitor).
- 3 Power up the chassis.

Install the software

The M9168C/68E/69E software is located on the M9168C/68E/69E Product Software and Information CD (M9168-10001). This software is also available for download at www.keysight.com/find/PXIattenuator.

The Keysight IO Libraries Suite (which includes the Keysight Connection Expert) is located on the Keysight IO Libraries Suite CD (E2094-60003). It is also available at www.keysight.com/find/iosuite.

NOTE

Version 16.0 (or newer) of the Keysight IO Libraries Suite is required.

The software installation includes the following items:

- Keysight IO Libraries Suite
- Soft front panel (SFP) software, device drivers (IVI-C and IVI-COM, and LabVIEW G), and related user documentation for the M9168C/68E/69E

Use the following procedure to install the software:

- 1** From the Keysight IO Libraries Suite CD (E2094-60003) browser, launch the installer.
- 2** Follow the installer prompts to install the IO Libraries Suite.
- 3** From the M9168C/68E/69E Product Software and Information CD (M9168-10001) browser, launch the installer.
- 4** Follow the installer prompts to install all software and documentation for the M9168C/68E/69E.
- 5** After installation has completed, power down the host PC followed by the chassis if using a remote controller.

CAUTION

If you are using a remote controller, shut down the PC BEFORE you power down the chassis.

When you restore power, power up the chassis BEFORE you power up the PC.

Step 4: Install the Module

NOTE

The module can be used in a chassis with a cPCI, PXI-1, or PXIh chassis peripheral slot.

3

The module can be installed in any standard PXI slot marked with a peripheral slot compatibility image (a circle containing the slot number).

7

^H The module can also be installed in any hybrid PXI slot marked with a peripheral slot compatibility image (the letter "H" and a solid circle containing the slot number).

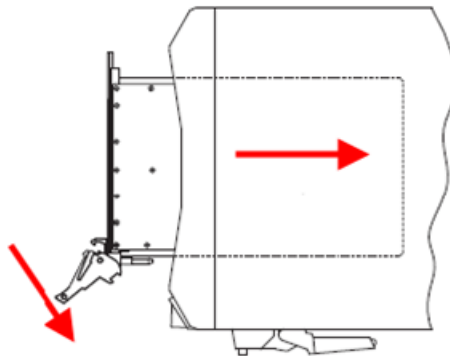
CAUTION

PXI hardware does not support "hot-swap" capabilities (changing modules while power is applied to the chassis).

Before installing a module into the chassis, the chassis must be powered off and unplugged to prevent damage to the module.

- 1 Ensure that the PXI chassis power switch is in the Off (Standby) position; then unplug the chassis.
- 2 If the chassis has multiple fan speed settings, ensure that the fans are set to automatic. Do not set the fan speed to low or turn it off.
- 3 Position the chassis so that there is ample space between the chassis fan intake and exhaust vents. Blockage by walls or obstructions affects the air flow needed for cooling. (Refer to the chassis documentation for more information about cooling).
- 4 Before installing a module, ensure that you remove the plastic thread protectors from the mounting screws. Before inserting the module into the chassis, back the mounting screws out to ensure that there is no interference between the screws and the mounting rails.

- 5** Holding the module by the injector/ejector handle, slide it into an available PXI (or hybrid) slot as shown in the figure below.
- Install the module into the PXI slot of the chassis by placing the module card edges into the front module guides (top and bottom).
 - Slide the module to the rear of the chassis and ensure that the injector/ejector handle is pushed down in the unlatched (downward) position.
 - Slide the module completely into the chassis. When you begin to feel resistance, push up on the injector/ejector handle to fully inject the module into the chassis.



- 6** Latch the module by pulling up on the injector/ejector handle, and secure the front panel to the chassis using the module front-panel mounting screws.
- 7** Tighten the screws on the module front panel. Performance may suffer if the screws are not tightened properly.
- 8** Verify that the PXI chassis fans are operable and free of dust and other contaminants that may restrict air flow.
- 9** Install all chassis covers and filler panels after installing the module. Missing filler panels may disrupt necessary air circulation in the chassis.

1 Getting Started

- 10** If you are using a remote controller such as the M9021A cable interface, connect the cable interface in the chassis to the PC host, according to the instructions provided with the cable interface.
- 11** Plug in and power up the PXI chassis.
- 12** Power up the host PC.

Step 5: Verify the M9168C/68E/69E Operation

The following procedure guides you to verify that the newly installed M9168C/68E/69E is operating correctly.

- 1 Run Keysight Connection Expert (from the desktop icon, or from **Start > All Programs > Keysight IO Libraries Suite > Keysight Connection Expert**). It will display the installed M9168C/68E/69E as shown below.

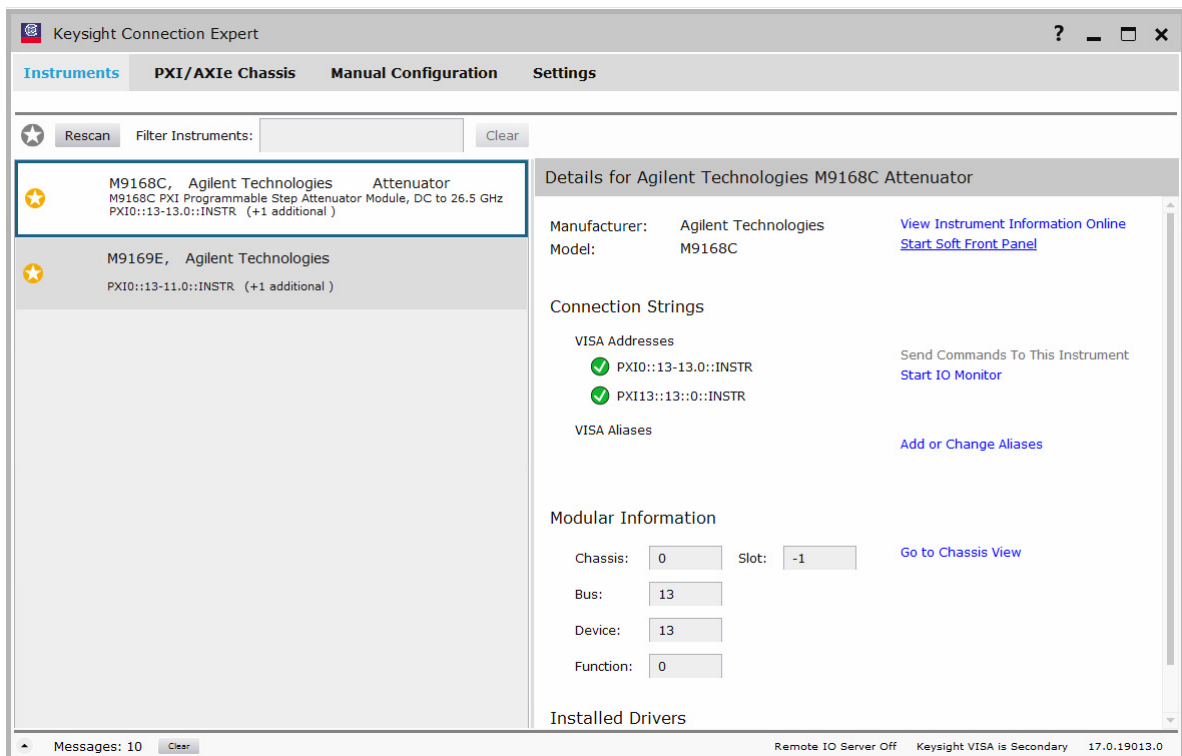


Figure 1-1 Keysight Connection Expert interface

NOTE

If the module does not appear on the Keysight Connection Expert, restart your PC or embedded controller and run Keysight Connection Expert again.

1 Getting Started

- 2 Launch the soft front panel (SFP) software from **Start > All Programs > Keysight > M9168x > M9168x SFP** or from the Keysight Connection Expert. On the Keysight Connection Expert, select the respective M9168C/68E/69E module and select **Start Soft Front Panel** (as shown in [Figure 1-2](#)) to launch the SFP.

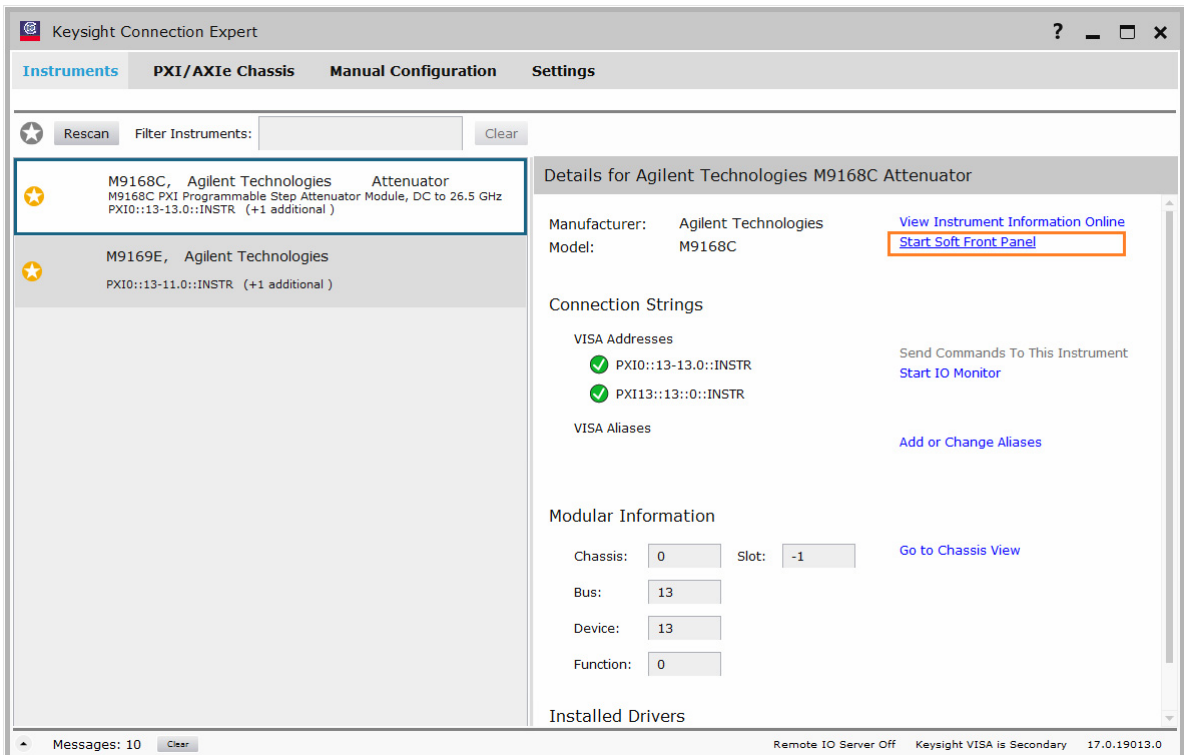


Figure 1-2 Launching the SFP from the Keysight Connection Expert

- 3 To verify that the M9168C/68E/69E is working properly, change the attenuation value by entering the value or clicking the up/down button to increase/decrease the value, as shown in [Figure 1-3](#), [Figure 1-4](#), and [Figure 1-5](#). You will hear a “click” sound from the module.

You can also verify the RF performance of the M9168C/68E/69E by using a network analyzer. Refer to the datasheet for the RF specifications.

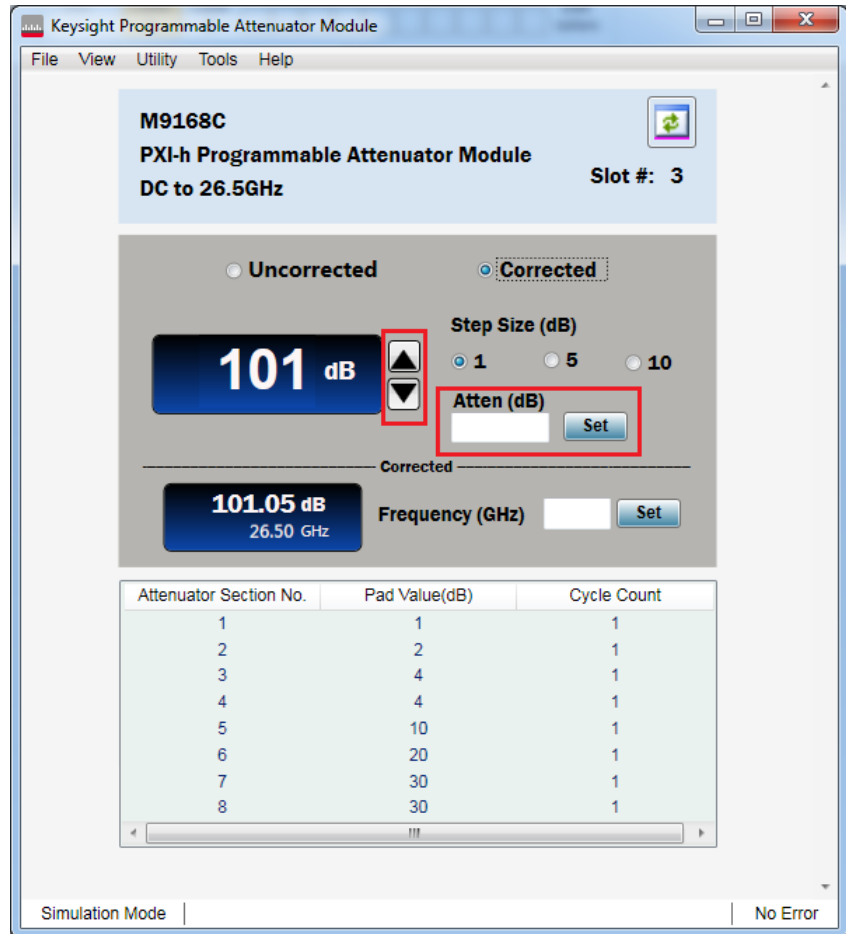


Figure 1-3 M9168C SFP verification

1 Getting Started

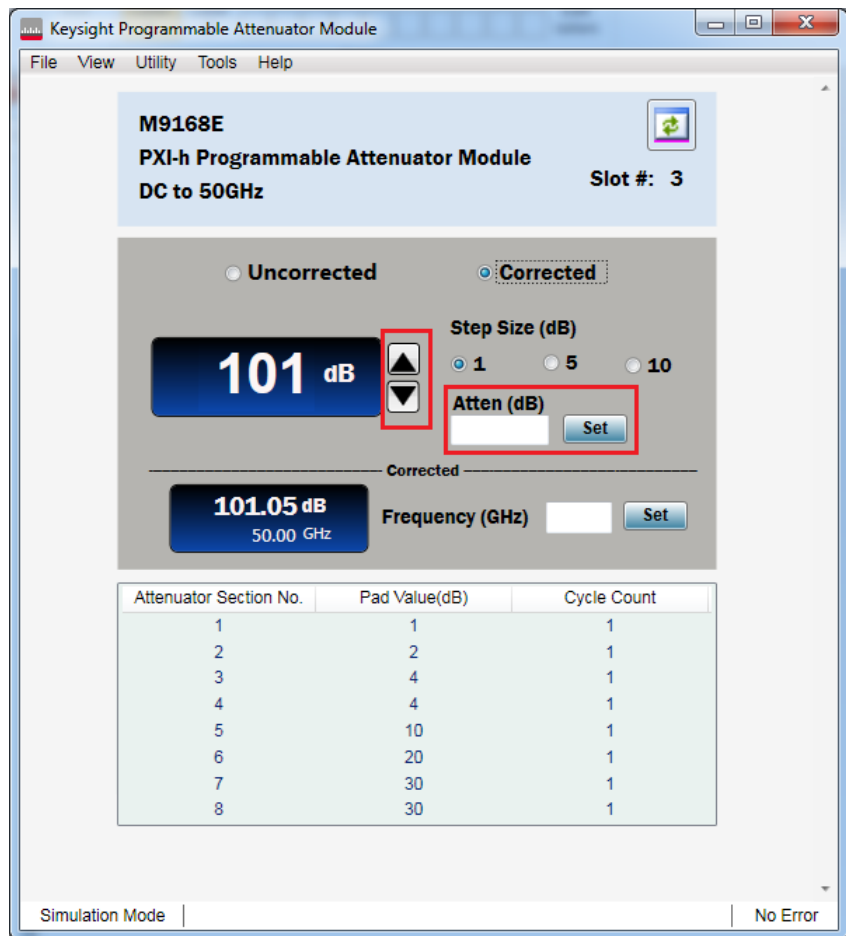


Figure 1-4 M9168E SFP verification

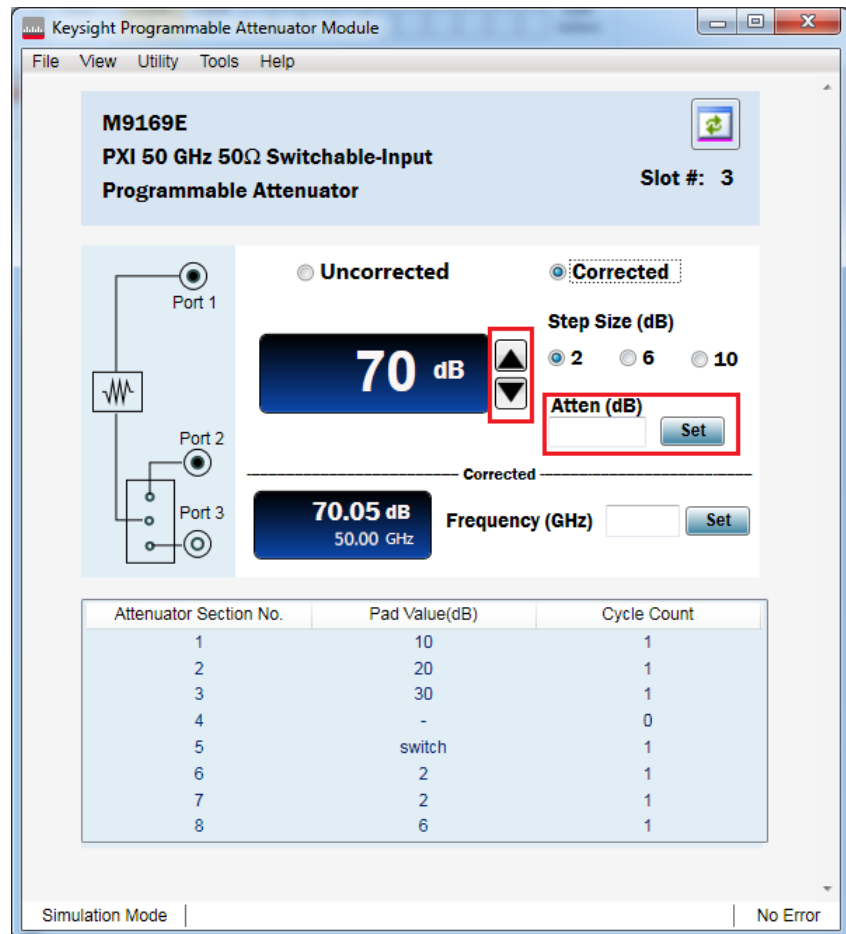


Figure 1-5 M9169E SFP verification

1 Getting Started

This page is intentionally left blank.

**M9168C/68E/69E PXI Programmable Step Attenuator Module
Startup and Service Guide**

2 Service and Maintenance

Service 20

Maintenance 20

Clean the connectors 20

Make good connections 22

Service

The M9168C/68E/69E does not have internal adjustments and should only be repaired by service-trained personnel. Should it become necessary to return the M9168C/68E/69E for repair or service, contact your nearest Keysight Service Center.

Maintenance

The connectors of the M9168C/68E/69E must be kept clean. Keysight recommends that the connectors be periodically inspected and cleaned if necessary.

Clean the connectors

Clean connectors are essential for ensuring the integrity of RF and microwave coaxial connectors.

- 1 Use compressed air or nitrogen.

WARNING

Always use protective eyewear when using compressed air or nitrogen.

Use compressed air (or nitrogen) to loosen particles on the connector mating plane surfaces.

You can use any source of clean, dry, low-pressure compressed air or nitrogen that has an effective oil-vapor filter and liquid condensation trap placed just before the outlet hose.

Ground the hose nozzle to prevent electrostatic discharge, and set the air pressure to less than 414 kPa (60 psi) to control the velocity of the air stream. High-velocity streams of compressed air can cause electrostatic effects when directed into a connector. These electrostatic effects can damage the device.

2 Clean the connector threads.

WARNING

Keep isopropyl alcohol away from heat, sparks, and flame. Store it in a tightly closed container. It is extremely flammable. In case of fire, use alcohol foam, dry chemicals, or carbon dioxide; water may be ineffective.

Use isopropyl alcohol with adequate ventilation and avoid contact with eyes, skin, and clothing. It causes skin irritation, may cause eye damage, and is harmful if swallowed or inhaled. It may be harmful if absorbed through the skin. Wash thoroughly after handling. In case of spill, soak up with sand or earth. Flush spill with water.

Dispose of isopropyl alcohol in accordance with all applicable federal, state, and local environmental regulations.

Use a lint-free swab or cleaning cloth moistened with isopropyl alcohol to remove any dirt or stubborn contaminants on a connector that cannot be removed with compressed air or nitrogen.

- a** Apply a small amount of isopropyl alcohol to a lint-free swab.
 - b** Clean the connector threads.
 - c** Let the alcohol evaporate, then blow the threads dry with a gentle stream of clean, low-pressure compressed air or nitrogen. Always completely dry a connector before you re-assemble or use it.
- 3** Clean the mating plane surfaces.
- a** Apply a small amount of isopropyl alcohol to a lint-free swab.
 - b** Clean the center and outer conductor mating plane surfaces. When cleaning a female connector, avoid snagging the swab on the center conductor contact fingers by using short strokes.
 - c** Let the alcohol evaporate, then blow the connector dry with a gentle stream of clean, low-pressure compressed air or nitrogen. Always completely dry a connector before you re-assemble or use it.

4 Re-inspect

Inspect the connector again to make sure that no particles or residue are present.

Make good connections

Good connections require a skilled operator. The most common cause of measurement error is bad connections. The following procedures explain how to make good connections.

Make a preliminary connection

- 1 Ground yourself and all devices. Wear a grounded wrist strap and work on a grounded, conductive table mat. Wear a heel strap when working in an area with conductive floor. If you are uncertain about the conductivity of your floor, wear a heel strap.
- 2 Visually inspect the connectors.
- 3 If necessary, clean the connectors.
- 4 Carefully align the connectors. The male connector center pin must slip concentrically into the contact finger of the female connector.
- 5 Push the connectors straight together.

CAUTION

Do not turn the device body. Only turn the connector nut. Damage to the center conductor and outer conductor can occur if the device body is twisted.

-
- 6 The preliminary connection is tight enough when the mating plane surfaces make uniform, light contact. Do not overtighten this connection. A connection in which the outer conductors make gentle at all points on both mating surfaces is sufficient. Very light finger pressure is enough to accomplish this.
 - 7 Ensure that the connectors are properly supported. Relieve any side pressure on the connection from long or heavy devices or cables.

Make the final connection using a torque wrench

- 1 Use a torque wrench to make the final connection. The table below provides information about the torque wrench. Using the torque wrench guarantees that the connection is not too tight, preventing possible connector damage. It also ensures that all connections are equally tight each time.

Connector type	Torque setting	Keysight torque wrench part number
3.5 mm	90 N-cm (8 in-lb)	8710-1765

- 2 Prevent the rotation of anything other than the connector nut that you are tightening. It may be possible to do this by hand if one of the connectors is fixed (as on a test port). In all situations, however, it is recommended that you use an open-end wrench to keep the body of the device from turning.
- 3 Position both wrenches within 90 degrees of each other before applying force. Refer to [Figure 2-1](#). Wrenches opposing each other (greater than 90 degrees apart) will cause a lifting action which can misalign and stress the connections of the devices involved. This is especially true when several devices are connected together.

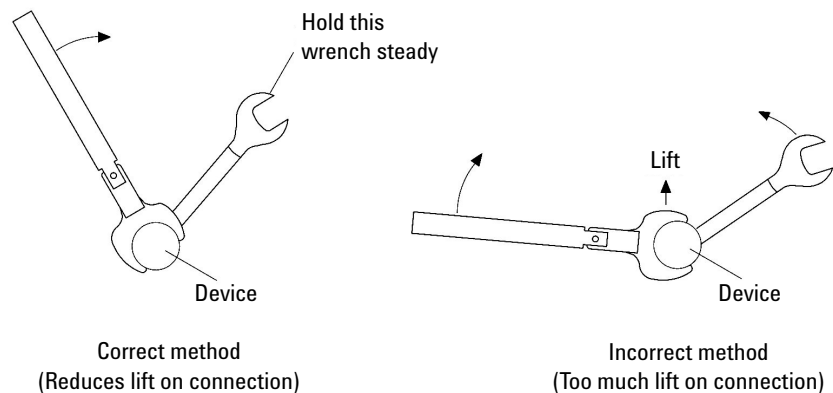


Figure 2-1 Wrench positions

- 4 Hold the torque wrench lightly, at the end of the handle only (beyond the groove). Refer to **Figure 2-2** below.

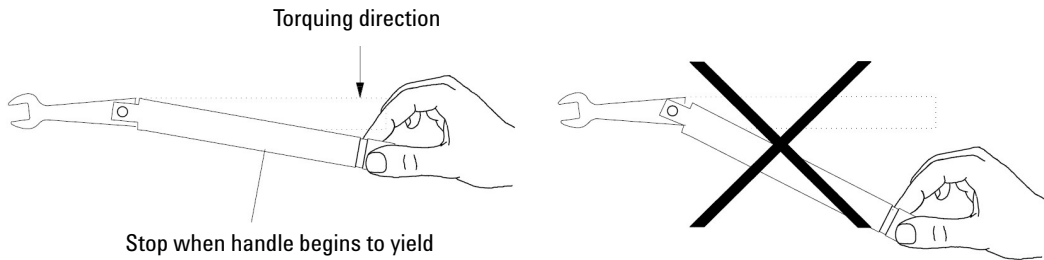


Figure 2-2 Using the torque wrench

- 5 Apply downward force perpendicular to the wrench handle. Refer to **Figure 2-2**. This applies torque to the connection through the wrench.
Do not hold the wrench so tightly that you push the handle straight down along its length rather than pivoting it, otherwise you apply an unknown amount of torque.
- 6 Tighten the connection just to the torque wrench break point. The wrench handle gives way at its internal pivot point. Refer to **Figure 2-2**. Do not tighten the connection further.

CAUTION

You do not need to fully break the handle of the torque wrench to reach the specified torque; doing so can cause the handle to kick back and loosen the connection. Any give at all in the handle is sufficient torque.

Do not pivot the wrench handle on your thumb or other fingers, otherwise you apply an unknown amount of torque to the connection when the wrench reaches its break point.

Do not twist the head of the wrench relative to the outer conductor mating plane. If you do, you apply more than the recommended torque.

Separate a connection

To avoid lateral (bending) force on the connector mating plane surface, always support the devices and connections.

CAUTION

Turn the connector nut, not the device body. Major damage to the center conductor can occur if the device is twisted.

- 1 Use an open-end wrench to prevent the device body from turning.
- 2 Use another open-end wrench to loosen the connector nut.
- 3 Complete the separation by hand, turning only the connector nut.
- 4 Pull the connectors straight apart without twisting, rocking, or bending either of the connectors.

2 Service and Maintenance

This page is intentionally left blank.

www.keysight.com

Contact us

To obtain service, warranty, or technical assistance, contact us at the following phone or fax numbers:

United States:

(tel) (800) 829 4444 (fax) 800 829 4433

Canada:

(tel) (877) 894 4414 (fax) 800 746 4866

China:

(tel) 800 810 0189 (fax) 800 820 2816

Europe:

(tel) 31 20 547 2111

Japan:

(tel) 0120 (421) 345 (fax) 0120 421 678

Korea:

(tel) 080 769 0800 (fax) (080) 769 0900

Latin America:

(tel) 305 269 7500

Taiwan:

(tel) 0800 047 866 (fax) 0800 286 331

Other Asia Pacific Countries:

(tel) (65) 6375 8100 (fax) (65) 6755 0042

Or visit Keysight World Wide Web at:

www.keysight.com/find/contactus

Product specifications and descriptions in this document are subject to change without notice. Always refer to the Keysight Web site for the latest revision.

This information is subject to change without notice.
© Keysight Technologies 2011 - 2015
Edition 3, March 2015



M9168-90001
www.keysight.com