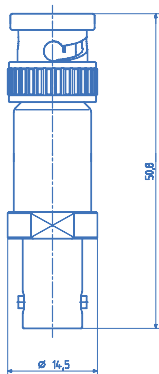


# MATCHING PADS

50 Ω – 75 Ω

## up to 1 GHz, BNC-Interface

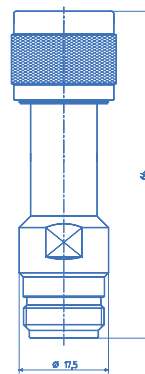
### 248 Type 6001.01.A



Item	<b>22543737</b>	
Interface	<b>BNC(m) 50 Ω</b> <b>BNC(f) 75 Ω</b>	
Voltage division <sup>8)</sup>		
50 → 75 Ω	4.25 dB	
75 → 50 Ω	7.8 dB	
VSWR		
≤ 0.5 GHz:		
50 Ω	≤ 1.08	
75 Ω	≤ 1.08	
≤ 1.0 GHz:		
50 Ω	≤ 1.10	
75 Ω	≤ 1.15	
Power	1 W <sup>9)</sup>	
Weight	31 g	

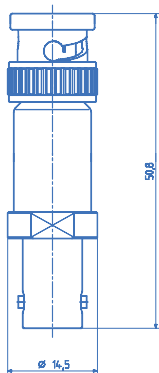
## up to 1 GHz, N-Interface

### 250 Type 6001.17.A



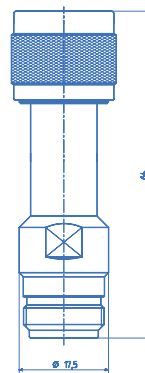
Item	<b>22642807</b>	
Interface	<b>N(m) 50 Ω</b> <b>N(f) 75 Ω</b>	
Voltage division <sup>8)</sup>		
50 → 75 Ω	4.25 dB	
75 → 50 Ω	7.8 dB	
VSWR		
≤ 0.5 GHz:		
50 Ω	≤ 1.08	
75 Ω	≤ 1.08	
≤ 1.0 GHz:		
50 Ω	≤ 1.10	
75 Ω	≤ 1.15	
Power	1 W <sup>9)</sup>	
Weight	66 g	

### 249 Type 6001.01.B



Item	<b>22550085</b>	
Interface	<b>BNC(f) 50 Ω</b> <b>BNC(m) 75 Ω</b>	
Voltage division <sup>8)</sup>		
50 → 75 Ω	4.25 dB	
75 → 50 Ω	7.8 dB	
VSWR		
≤ 0.5 GHz:		
50 Ω	≤ 1.08	
75 Ω	≤ 1.08	
≤ 1.0 GHz:		
50 Ω	≤ 1.10	
75 Ω	≤ 1.15	
Power	1 W <sup>9)</sup>	
Weight	31 g	

### 251 Type 6001.17.B



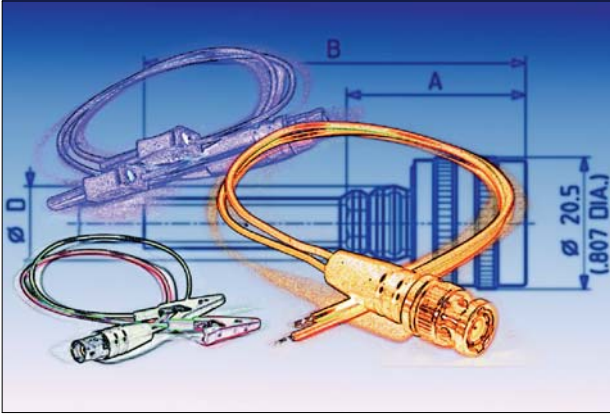
Item	<b>22642806</b>	
Interface	<b>N(f) 50 Ω</b> <b>N(m) 75 Ω</b>	
Voltage division <sup>8)</sup>		
50 → 75 Ω	4.25 dB	
75 → 50 Ω	7.8 dB	
VSWR		
≤ 0.5 GHz:		
50 Ω	≤ 1.08	
75 Ω	≤ 1.08	
≤ 1.0 GHz:		
50 Ω	≤ 1.10	
75 Ω	≤ 1.15	
Power	1 W <sup>9)</sup>	
Weight	66 g	

<sup>8)</sup>Voltage division is the ratio of input to output voltage in dB. The power attenuation is 5.7 dB in both directions

<sup>9)</sup> At maximum +40 °C ambient temperature, derated linearly to 0 W at +125 °C ambient temperature

# HUBER+SUHNER TEST+MEASUREMENT ADAPTOR CABLES COAXIAL – SYMMETRIC

## Adaptor cables



Many low-frequency measurement tasks in the laboratory require a simple and reliable connection between coaxial and symmetrical transmission lines. This may be in the form of a device with coaxial connectors and a device with banana jacks, or the connection of symmetrical conductors to a cathode-ray oscilloscope.

All connections of this type can be quickly established using HUBER+SUHNER test leads.

Adaptors for the direct connection between BNC and banana plugs and jacks are described in the «HUBER+SUHNER Coaxial Connectors – General Catalogue».

### Content

#### Adaptor cables

Coaxial – Symmetric cable adaptor

Series BNC ..... 72