

# Manta

## G-201



- 14 fps @ 2 Megapixel
- PoE optional
- Angled head and boardlevel variants
- Video-iris lens control

## Description

GigE Vision camera, 2 Megapixels, Sony ICX274, PoE option

Manta G-201B/C is a low cost GigE Vision camera with a Sony ICX274 sensor. It runs at 14 fps (full resolution). With a smaller ROI, higher frame rates are possible. It incorporates three LUTs, sophisticated color correction algorithms, a robust metal housing, and many modular options.

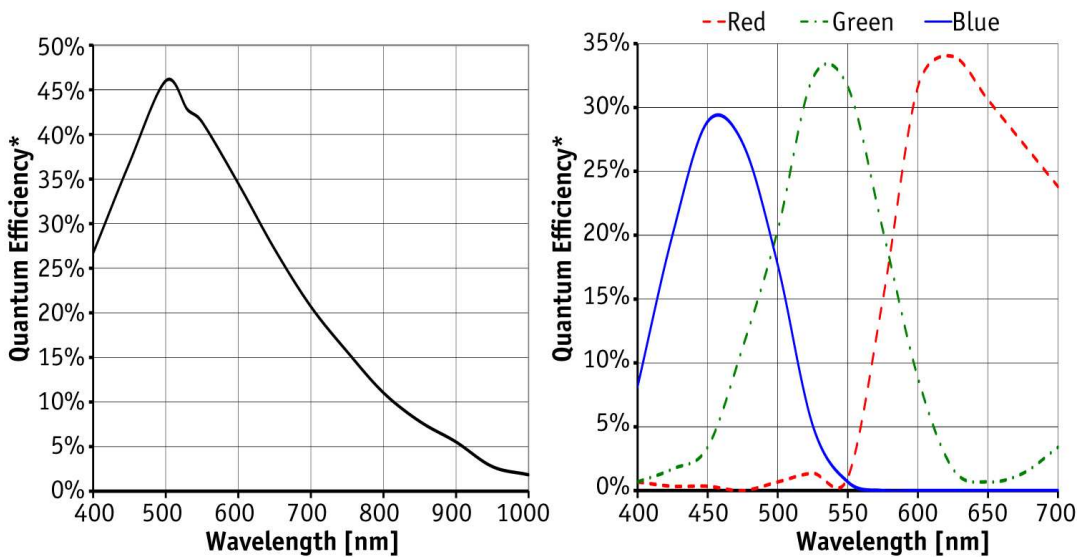
Options

- PoE (Power over Ethernet)
- Various IR cut/pass filters and lens mounts
- Angled head, board level version, white medical housing

## Specifications

Manta	G-201
Interface	IEEE 802.3 1000BASE-T, IEEE 802.3af (PoE) optional
Resolution	1624 × 1234
Sensor	Sony ICX274
Sensor type	CCD Progressive
Sensor size	Type 1/1.8
Cell size	4.4 μm
Lens mount	C/CS-Mount
Max frame rate at full resolution	14 fps
ADC	12 bit
On-board FIFO	32 Mbyte
	<b>Output</b>
Bit depth	8-12 bit

Manta	G-201
Mono modes	Mono8, Mono12, Mono12Packed
Color modes YUV	YUV411Packed, YUV422Packed, YUV444Packed
Color modes RGB	RGB8Packed, BGR8Packed, RGBA8Packed, BGRA8Packed
Raw modes	BayerRG8, BayerRG12Packed, BayerRG12
<b>General purpose inputs/outputs (GPIOs)</b>	
Opto-isolated I/Os	2 inputs, 2 outputs
RS-232	1
<b>Operating conditions/dimensions</b>	
Operating temperature	+5 °C ... +45 °C
Power requirements (DC)	PoE, or 8-30 VDC
Power consumption (@12 V)	4.2 W (PoE) / 3.6 W (non-PoE)
Mass	210 g (PoE) / 200 g (non-PoE)
Body dimensions (L × W × H in mm)	86.4 × 44 × 29 mm incl. connectors
Regulations	CE, FCC Class B, RoHS



\*QE measured without protection glass or filters. With glass or filters, quantum efficiency decreases by approximately 10%.

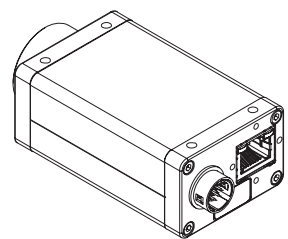
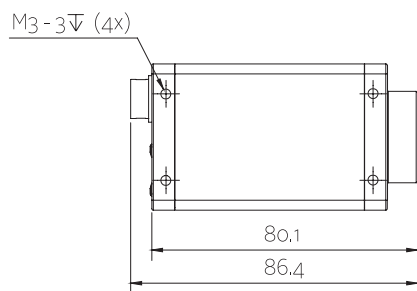
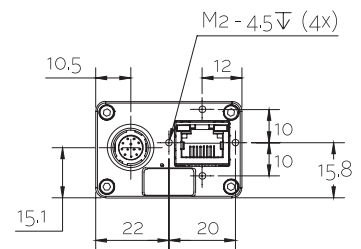
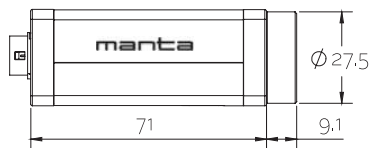
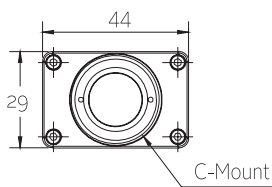
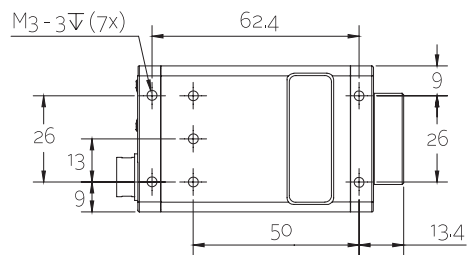
## Features

- Video-type auto iris
- ROI, separate ROI for auto features
- Binning
- Decimation
- Auto gain (manual gain control: 0 to 31 dB)



- Auto exposure (51  $\mu$ s to 60 s)
- Auto white balance
- LUTs (look-up tables)
- Gamma
- Hue, saturation, color correction
- StreamBytesPerSecond (easy bandwidth control)
- Stream hold
- Sync out modes: Trigger ready, input, exposing, readout, imaging, strobe, GPO
- Event channel
- Chunk data
- Storable user sets

## Technical drawing





## Applications

Manta G-201B/C is a robust and low cost industrial GigE Vision camera. Thanks to its flexibility, it can be used for a variety of applications. On request, board level versions with separate sensor head (up to 200 mm distance to camera mainboard) are available. The Manta incorporates three LUTs (separate R, G, and B control), color correction, and many more features.

Typical applications:

- Machine vision
- ITS (Intelligent Traffic Solutions)
- Entertainment and multimedia applications
- 3D applications
- ITS (Intelligent traffic solutions)
- ... and many more