

Manta

G-125



- 30 fps @ 1.2 Megapixel
- PoE optional
- Angled head and boardlevel variants
- Video-iris lens control

Description

GigE Vision camera with Sony ICX445 EXview HAD sensor and PoE option

Manta G-125B/C is a low cost GigE Vision camera with a Sony ICX445 sensor. It runs at 30 fps (full resolution). This camera incorporates three LUTs, sophisticated color correction algorithms, a robust metal housing, and many modular options.

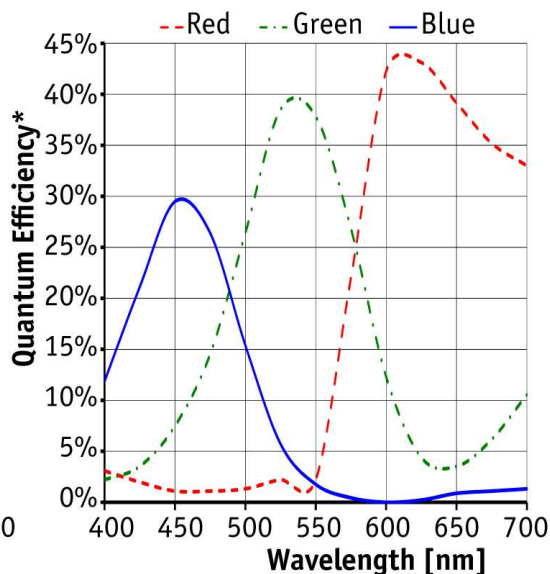
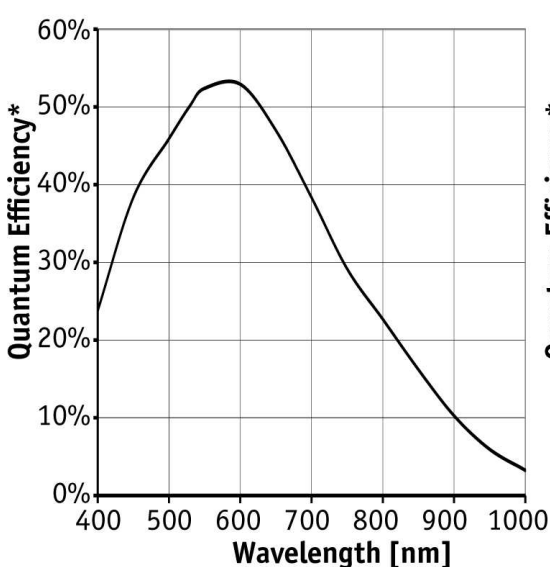
Options

- PoE (Power over Ethernet)
- Various IR cut/pass filters and lens mounts
- Angled head, board level version, white medical housing

Specifications

Manta	G-125
Interface	IEEE 802.3 1000BASE-T, IEEE 802.3af (PoE) optional
Resolution	1292 × 964
Sensor	Sony ICX445
Sensor type	CCD Progressive
Sensor size	Type 1/3
Cell size	3.75 μm
Lens mount	C/CS-Mount
Max frame rate at full resolution	30 fps
ADC	12 bit
On-board FIFO	32 Mbyte
	Output
Bit depth	8-12 bit

Manta	G-125
Mono modes	Mono8, Mono12, Mono12Packed
Color modes YUV	YUV411Packed, YUV422Packed, YUV444Packed
Color modes RGB	RGB8Packed, BGR8Packed, RGBA8Packed, BGRA8Packed
Raw modes	BayerRG8, BayerRG12Packed, BayerRG12
General purpose inputs/outputs (GPIOs)	
Opto-isolated I/Os	2 inputs, 2 outputs
RS-232	1
Operating conditions/dimensions	
Operating temperature	+5 °C ... +45 °C
Power requirements (DC)	PoE, or 8-30 VDC
Power consumption (@12 V)	4.2 W (PoE) / 3.6 W (non-PoE)
Mass	210 g (PoE) / 200 g (non-PoE)
Body dimensions (L × W × H in mm)	86.4 × 44 × 29 mm incl. connectors
Regulations	CE, FCC Class B, RoHS



*QE measured without protection glass or filters. With glass or filters, quantum efficiency decreases by approximately 10%.

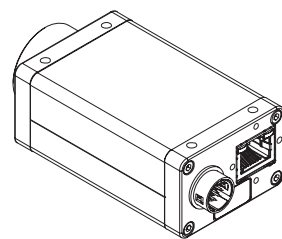
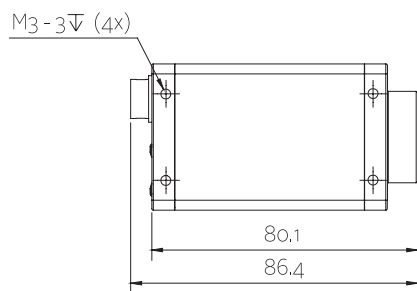
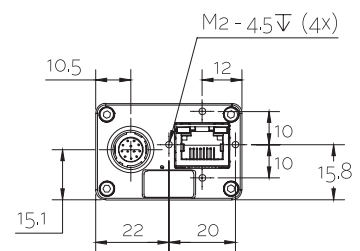
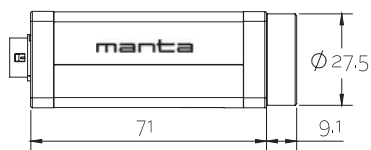
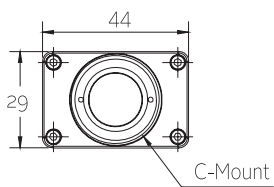
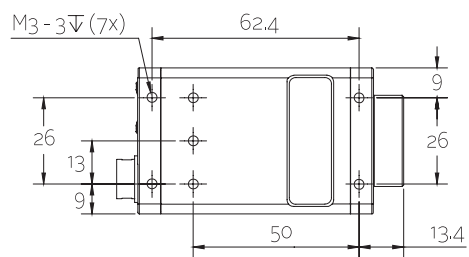
Features

- Video-type auto iris
- ROI, separate ROI for auto features
- Binning
- Decimation
- Auto gain (manual gain control: 0 to 31 dB)



- Auto exposure (21 μ s to 60 s)
- Auto white balance
- LUTs (look-up tables)
- Gamma
- Hue, saturation, color correction
- StreamBytesPerSecond (easy bandwidth control)
- Stream hold
- Sync out modes: Trigger ready, input, exposing, readout, imaging, strobe, GPO
- Event channel
- Chunk data
- Storable user sets

Technical drawing



Applications

Manta G-125B/C is a sensitive GigE Vision camera with Sony's ICX445 sensor. Like the other Manta cameras, it is equipped with three separate LUTs for R, G, and B, color correction, and many other features. On request, board level versions with separate sensor head (up to 200 mm to camera mainboard) are available.

- Applications which require high sensitivity (low light)
- Quality control
- ITS (Intelligent traffic solutions)
- Semiconductor inspection
- 3D inspection
- Food inspection
- ... and many more