

Manta

G-046



- 67 fps @ 0.5 Megapixel
- PoE optional
- Angled head and boardlevel variants
- Video-iris lens control

Description

GigE Vision camera, XGA, Sony ICX415 - PoE option

Manta G-046B/C is a very affordable GigE Vision camera with XGA resolution and a Sony ICX415 sensor. It runs at 67 fps (full resolution). With a smaller ROI, faster frame rates are possible.

This camera incorporates three LUTs, sophisticated color correction algorithms, a robust metal housing, and many modular options.

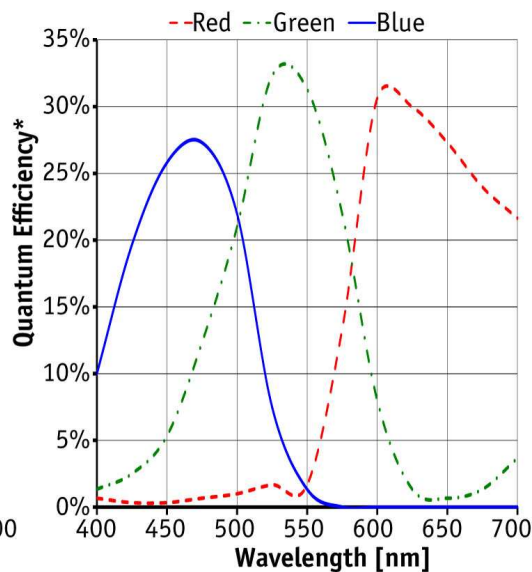
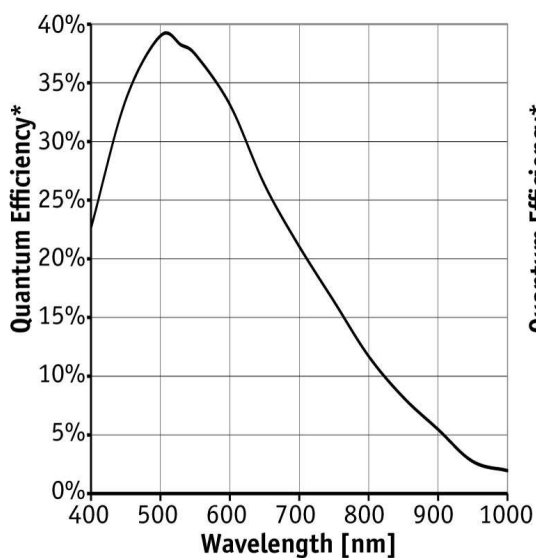
Options

- PoE (Power over Ethernet)
- Various IR cut/pass filters and lens mounts
- Angled head, board level version, white medical housing

Specifications

| Manta | G-046 |
|-----------------------------------|--|
| Interface | IEEE 802.3 1000BASE-T, IEEE 802.3af (PoE) optional |
| Resolution | 780 × 580 |
| Sensor | Sony ICX415 |
| Sensor type | CCD Progressive |
| Sensor size | Type 1/2 |
| Cell size | 8.3 μm |
| Lens mount | C/CS-Mount |
| Max frame rate at full resolution | 67 fps |
| ADC | 12 bit |
| On-board FIFO | 32 Mbyte |
| | Output |
| Bit depth | 8-12 bit |

| Manta | G-046 |
|---|--|
| Mono modes | Mono8, Mono12, Mono12Packed |
| Color modes YUV | YUV411Packed, YUV422Packed, YUV444Packed |
| Color modes RGB | RGB8Packed, BGR8Packed, RGBA8Packed, BGRA8Packed |
| Raw modes | BayerRG8, BayerRG12Packed, BayerRG12 |
| General purpose inputs/outputs (GPIOs) | |
| Opto-isolated I/Os | 2 inputs, 2 outputs |
| RS-232 | 1 |
| Operating conditions/dimensions | |
| Operating temperature | +5 °C ... +45 °C |
| Power requirements (DC) | PoE, or 8-30 VDC |
| Power consumption (@12 V) | 4.2 W (PoE) / 3.6 W (non-PoE) |
| Mass | 210 g (PoE) / 200 g (non-PoE) |
| Body dimensions (L × W × H in mm) | 86.4 × 44 × 29 mm incl. connectors |
| Regulations | CE, FCC Class B, RoHS |



*QE measured without protection glass or filters. With glass or filters, quantum efficiency decreases by approximately 10%.

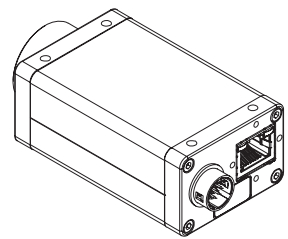
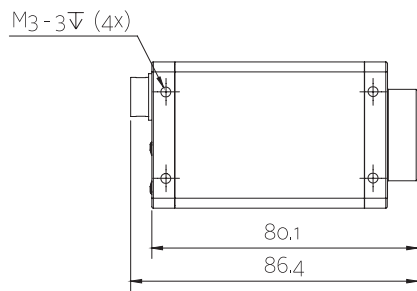
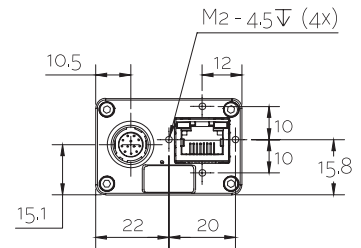
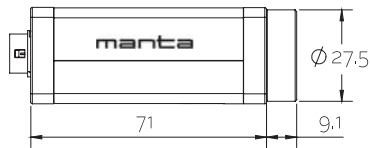
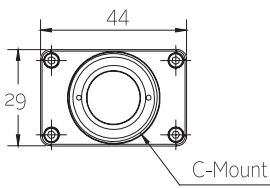
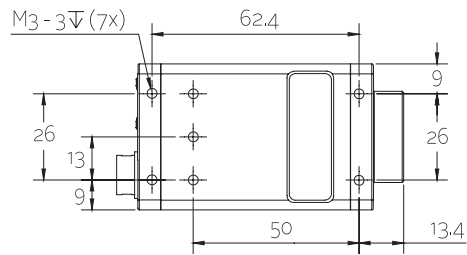
Features

- Video-type auto iris
- ROI, separate ROI for auto features
- Binning
- Decimation
- Auto gain (manual gain control: 0 to 31 dB)



- Auto exposure (26 μ s to 60 s)
- Auto white balance
- LUTs (look-up tables)
- Gamma
- Hue, saturation, color correction
- StreamBytesPerSecond (easy bandwidth control)
- Stream hold
- Sync out modes: Trigger ready, input, exposing, readout, imaging, strobe, GPO
- Event channel
- Chunk data
- Storable user sets

Technical drawing





Applications

Manta G-046B/C is a sensitive, flexible GigE Vision camera with many useful options: PoE (Power over Ethernet), angled head, boardlevel versions and more.

Typical applications:

- Applications which require high sensitivity (low light)
- Semiconductor inspection
- Pharmaceutical inspection
- Logistics
- ITS/Traffic monitoring
- ... and more