

Manta

G-504



- 9 fps @ 5 Megapixel
- PoE optional
- Angled head and boardlevel variants
- Video-iris lens control

Description

5 Megapixel GigE Vision camera, ICX655 - PoE option

Manta G-504B/C is a 5 Megapixel GigE Vision camera with the Sony ICX655 sensor. It runs at 9 fps (full resolution). The camera incorporates three LUTs, sophisticated color correction algorithms, a robust metal housing, and many modular options.

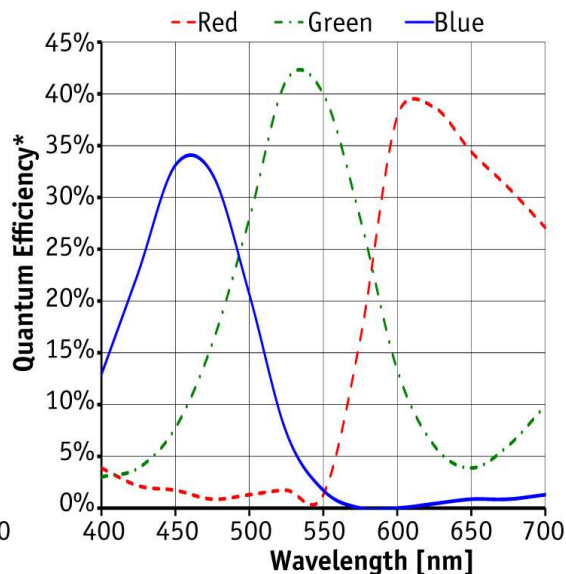
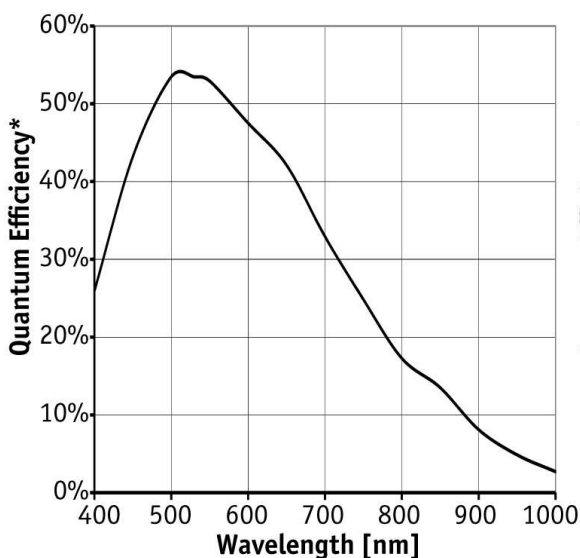
Options

- PoE (Power over Ethernet)
- Various IR cut/pass filters and lens mounts
- Angled head, board level version, white medical housing

Specifications

Manta	G-504
Interface	IEEE 802.3 1000BASE-T, IEEE 802.3af (PoE) optional
Resolution	2452 × 2056
Sensor	Sony ICX655
Sensor type	CCD Progressive
Sensor size	Type 2/3
Cell size	3.45 μm
Lens mount	C/CS-Mount
Max frame rate at full resolution	9 fps
ADC	12 bit
On-board FIFO	32 Mbyte
Output	
Bit depth	8-12 bit

Manta	G-504
Mono modes	Mono8, Mono12, Mono12Packed
Color modes YUV	YUV411Packed, YUV422Packed, YUV444Packed
Color modes RGB	RGB8Packed, BGR8Packed, RGBA8Packed, BGRA8Packed
Raw modes	BayerGB8, BayerGB12, BayerGB12Packed
General purpose inputs/outputs (GPIOs)	
Opto-isolated I/Os	2 inputs, 2 outputs
RS-232	1
Operating conditions/dimensions	
Operating temperature	+5 °C ... +45 °C
Power requirements (DC)	PoE, or 8-30 VDC
Power consumption (@12 V)	4.6 W (PoE) / 3.9 W (non-PoE)
Mass	210 g (PoE) / 200 g (non-PoE)
Body dimensions (L × W × H in mm)	86.4 × 44 × 29 mm incl. connectors
Regulations	CE, FCC Class B, RoHS



*QE measured without protection glass or filters. With glass or filters, quantum efficiency decreases by approximately 10%.

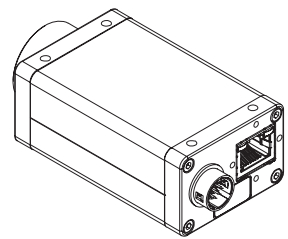
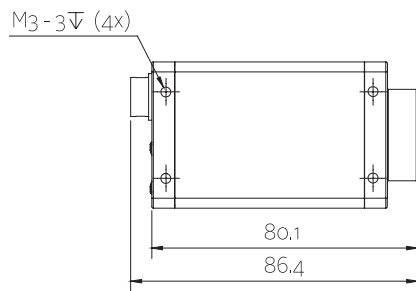
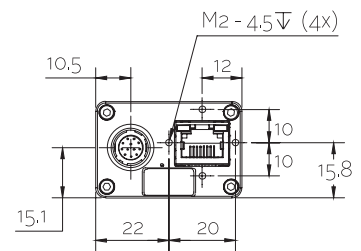
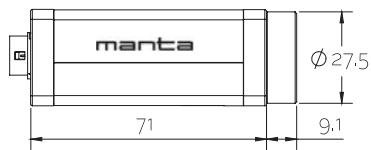
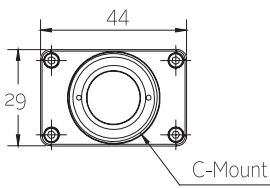
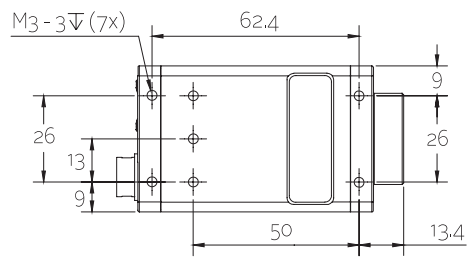
Features

- Video-type auto iris
- ROI, separate ROI for auto features
- Binning
- Decimation
- Auto gain (manual gain control: 0 to 32 dB)



- Auto exposure (38 μ s to 60 s)
- Auto white balance
- LUTs (look-up tables)
- Gamma
- Hue, saturation, color correction
- StreamBytesPerSecond (easy bandwidth control)
- Stream hold
- Sync out modes: Trigger ready, input, exposing, readout, imaging, strobe, GPO
- Event channel
- Chunk data
- Storable user sets

Technical drawing





Applications

Manta G-504B/C is a 5 Megapixel GigE Vision camera with an outstanding price/performance ratio. On request, board level versions with separate sensor head (up to 200 mm distance to camera mainboard) are available. Thanks to the three LUTs (separate R, G, and B control), color correction features and the PoE option, this Manta camera suits a large variety of imaging applications.

Applications:

- Industrial inspection with high resolution
- Automation
- Logistics
- Science and research
- Healthcare and medical
- ITS (Intelligent traffic solutions)
- ... and many more