

Manta

G-145



- 15 fps @ 1.4 Megapixel
- PoE optional
- Angled head and boardlevel variants
- Video-iris lens control

Description

GigE Vision camera with Sony ICX285 EXview HAD CCD, PoE option

Manta G-145B/C is an inexpensive GigE Vision camera with the very sensitive Sony ICX285 EXview HAD sensor. It runs at 15 fps (full resolution). The Manta incorporates three LUTs, sophisticated color correction algorithms, a robust metal housing, and many modular options.

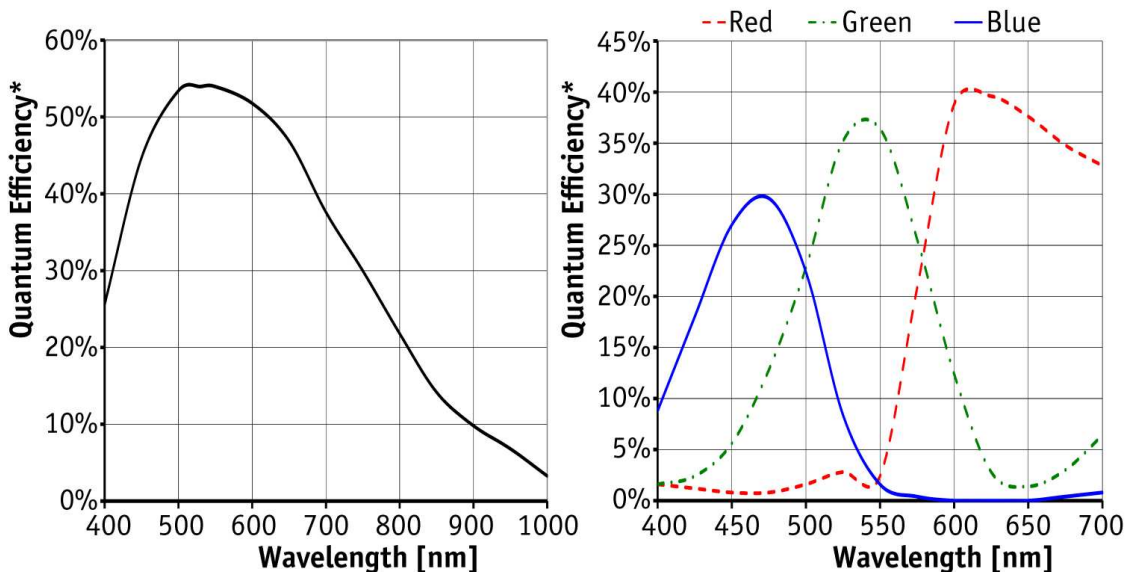
Options

- PoE (Power over Ethernet)
- Various IR cut/pass filters and lens mounts
- Angled head, board level version, white medical housing

Specifications

| Manta | G-145 |
|-----------------------------------|--|
| Interface | IEEE 802.3 1000BASE-T, IEEE 802.3af (PoE) optional |
| Resolution | 1388 × 1038 |
| Sensor | Sony ICX285 |
| Sensor type | CCD Progressive |
| Sensor size | Type 2/3 |
| Cell size | 6.45 μm |
| Lens mount | C/CS-Mount |
| Max frame rate at full resolution | 15 fps |
| ADC | 12 bit |
| On-board FIFO | 32 Mbyte |
| Output | |
| Bit depth | 8-12 bit |

| Manta | G-145 |
|---|--|
| Mono modes | Mono8, Mono12, Mono12Packed |
| Color modes YUV | YUV411Packed, YUV422Packed, YUV444Packed |
| Color modes RGB | RGB8Packed, BGR8Packed, RGBA8Packed, BGRA8Packed |
| Raw modes | BayerRG8, BayerRG12Packed, BayerRG12 |
| General purpose inputs/outputs (GPIOs) | |
| Opto-isolated I/Os | 2 inputs, 2 outputs |
| RS-232 | 1 |
| Operating conditions/dimensions | |
| Operating temperature | +5 °C ... +45 °C |
| Power requirements (DC) | PoE, or 8-30 VDC |
| Power consumption (@12 V) | 4.3 W (PoE) / 3.7 W (non-PoE) |
| Mass | 210 g (PoE) / 200 g (non-PoE) |
| Body dimensions (L × W × H in mm) | 86.4 × 44 × 29 mm incl. connectors |
| Regulations | CE, FCC Class B, RoHS |



*QE measured without protection glass or filters. With glass or filters, quantum efficiency decreases by approximately 10%.

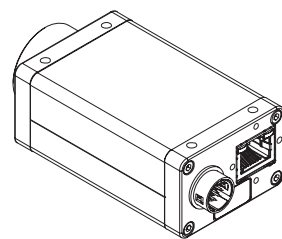
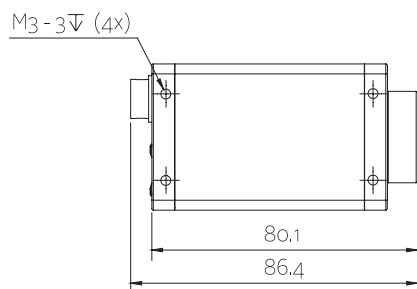
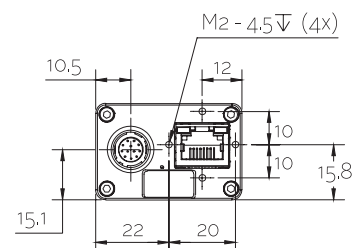
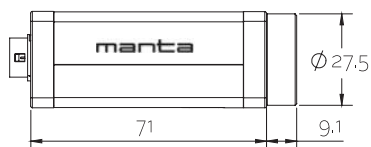
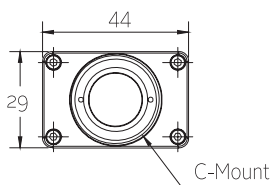
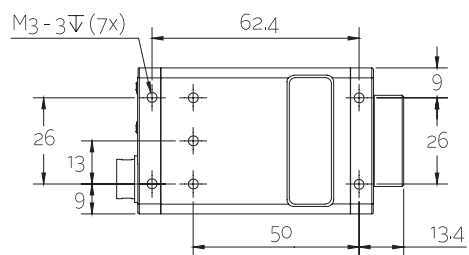
Features

- Video-type auto iris
- ROI, separate ROI for auto features
- Binning
- Decimation
- Auto gain (manual gain control: 0 to 33 dB)



- Auto exposure (43 μ s to 60 s)
- Auto white balance
- LUTs (look-up tables)
- Gamma
- Hue, saturation, color correction
- StreamBytesPerSecond (easy bandwidth control)
- Stream hold
- Sync out modes: Trigger ready, input, exposing, readout, imaging, strobe, GPO
- Event channel
- Chunk data
- Storable user sets

Technical drawing





Applications

Manta G-145B/C is a very affordable GigE Vision camera for machine vision and medical imaging applications. Its sensor is very sensitive in the visible spectrum, and also suitable for applications which require NIR (near infrared) sensitivity. On request, board level versions with separate sensor head (up to 200 mm distance to camera mainboard) are available.

- Machine vision
- Science and research
- Medical and healthcare
- Microscopy
- Ophthalmology
- ITS/Traffic monitoring
- ... and many more