

## QWT137-30

### WR-137, 30W

Features:  
\* Low VSWR

Applications:  
\* Transmitters  
\* Antennas  
\* Laboratory Test  
\* Impedance Matching

#### Electrical

Frequency: 5.38~8.17GHz  
Average Power: 30W  
VSWR: 1.2 max.

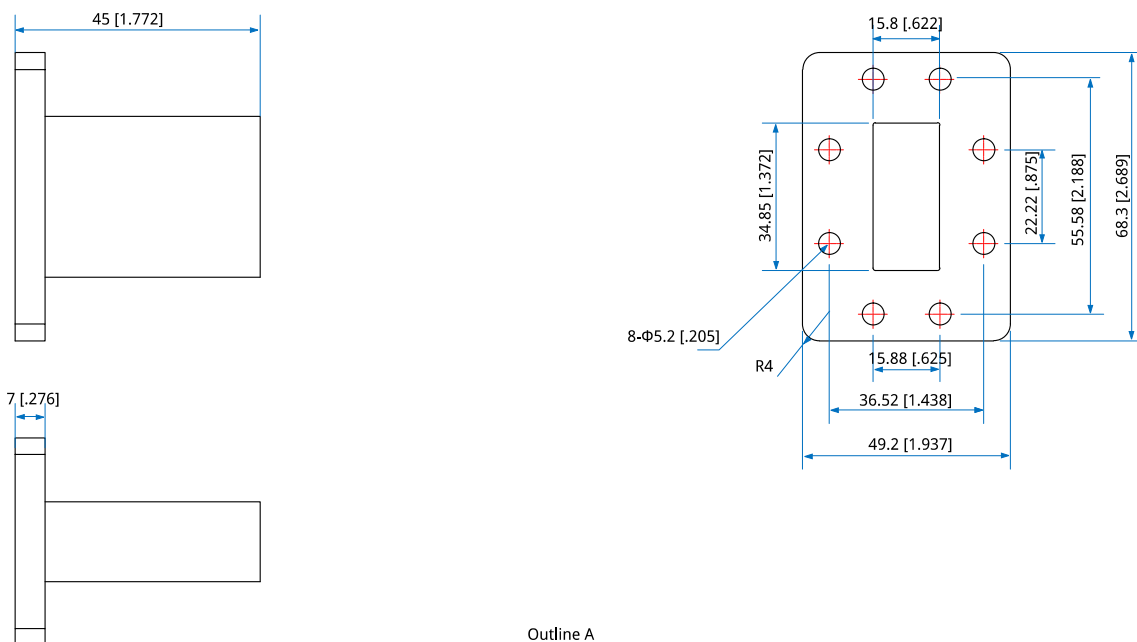
#### Mechanical

Waveguide Size: WR-137 (BJ70)  
Flange: FDP70

#### Environmental

Temperature: -55~+125°C

#### Outline Drawings



Outline A

Unit: mm [in]  
Tolerance:  $\pm 0.5\text{mm}$  [ $\pm 0.02\text{in}$ ]

#### How To Order

**QWT137-30-Y-Z**

Y : Material

Z : Flange type

Material naming rules:  
A - Aluminum (Outline A)

Flange naming rules:  
2 - FDP70 (Outline A)

Examples:

To order a small size waveguide termination, WR-137, 30W, Aluminum, FDP70, specify QWT137-30-A-2.

Customization is available upon request.