

## QBF-8192-16384-20

8192~16384MHz, 20dBc

### Features:

- \* High Stopband Rejection
- \* Small Size

### Applications:

- \* Telecom
- \* Laboratory Test
- \* Receivers
- \* Instrumentation

### Electrical

Passband:	8192~16384MHz
Passband Insertion Loss:	3dB max.
VSWR:	1.8 max.
Stopband Attenuation:	10dBc@7.5GHz min. 10dBc@17.1GHz min. 20dBc@7.1GHz min. 20dBc@17.5GHz min.

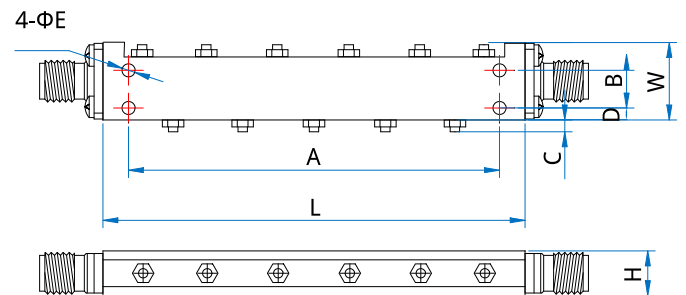
### Mechanical

RF Connectors:	SMA Female
Mounting:	4- $\Phi$ 2.2mm through-hole

### Environmental

Operating Temperature:	-40~+70°C
Non-operating Temperature:	-55~+85°C

### Outline Drawings



Size	L	W	H	A	B	C	D	E
mm	52	14.5	11.6	42.6	9	2	1.5	2.2
in	2.047	0.571	0.457	1.677	0.354	0.079	0.059	0.087

Unit: mm [in]

Tolerance:  $\pm 0.2$ mm [ $\pm 0.008$ in]

### How To Order

[QBF-8192-16384-20](#)

Customization is available upon request.