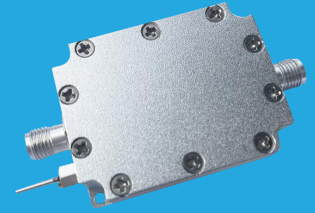


QLA-600-4200-35-10

600~4200MHz, 35dB, 1.0dB

- | | |
|---|--|
| Features:
* Small Size
* Low Power Consumption | Applications:
* Wireless
* Transmitter
* Laboratory Test |
|---|--|



Electrical

Frequency:	600~4200MHz
Gain:	35dB min.
Gain Flatness:	±2dB max.
Noise Figure:	1.0dB typ.
Output Power (P1dB):	21dBm typ.
Input VSWR:	2.0 typ.
Output VSWR:	2.0 typ.
Voltage:	+5V DC
Impedance:	50Ω

Absolute Maximum Ratings

RF Input Power:	+22dBm
Voltage:	+7V

Mechanical

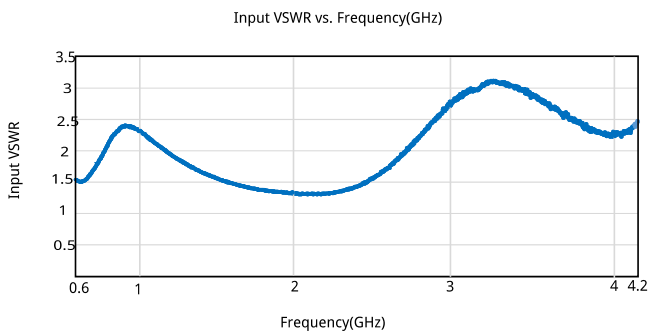
Size*1:	40*30*15mm 1.575*1.181*0.591in
RF Connectors:	SMA female
Power Supply Connectors:	Feed Through/Terminal Post

[1] Exclude connectors.

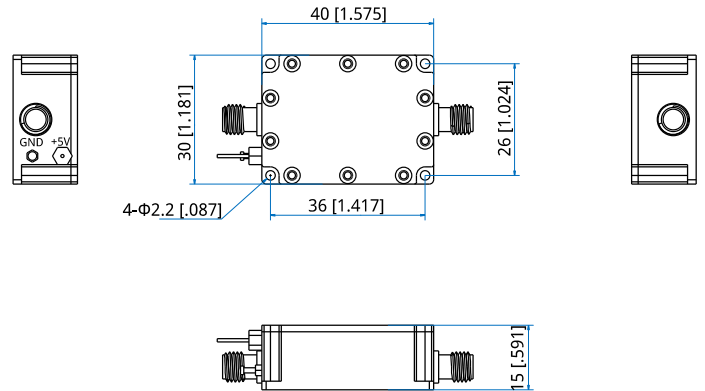
Environmental

Operating Temperature:	-40~+85°C
Non-operating Temperature:	-55~+150°C

Typical Performance Curves



Outline Drawings

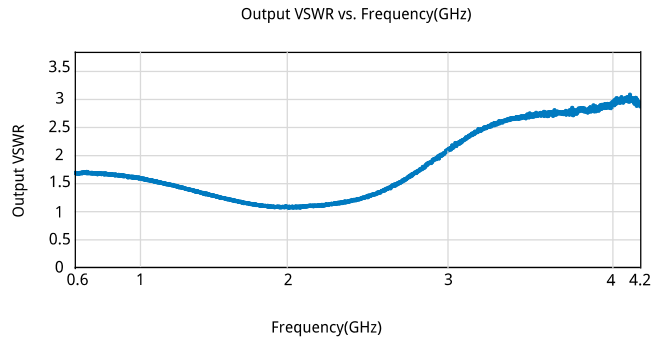


Unit: mm [in]
Tolerance: ±0.2mm [±0.008in]

How To Order

QLA-600-4200-35-10

Customization is available upon request.



Low Noise Amplifier

