

QFA18K4

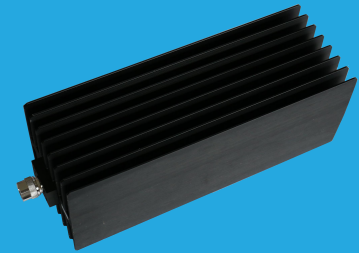
DC~18GHz, 400W

Features:

- * Low VSWR
- * High Attenuation Flatness

Applications:

- * Wireless
- * Transmitter
- * Laboratory Test
- * Radar



Electrical

Frequency:	DC~18GHz
Attenuation:	20~60dB
Impedance:	50Ω
Average Power*1:	400W@25°C
Peak Power:	5KW (5μS pulse width, 4% duty cycle) @DC~12.4GHz 1KW (5μS pulse width, 20% duty cycle) @18GHz

[1] Derated linearly to 20W@120°C.

Mechanical

RF Connectors: N Male, N Female

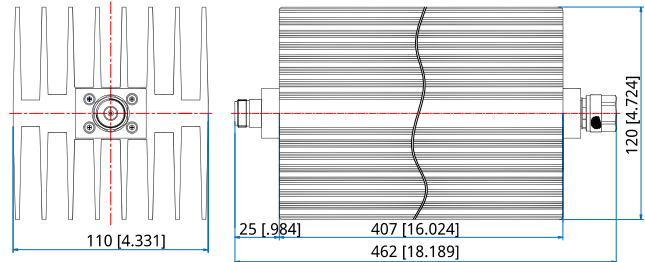
Environmental

Temperature: -55~+125°C

Attenuation Accuracy and VSWR

Frequency (GHz)	Attenuation Accuracy (±dB) vs. Attenuation (dB)				VSWR (max.)
	20	30	40	50~60	
DC~4	1.2	0.8	0.9	0.9	1.20
DC~8	1.5	0.9	0.9	0.9	1.25
DC~12.4	2.0	1.0	1.1	1.1	1.35
DC~18	4.5	1.5	1.5	1.5	1.45

Outline Drawings



Outline A

Unit: mm [in] Tolerance: ±2mm [±0.08in]

How To Order

QFA18K4-X-Y-Z

X: Frequency in GHz

Y: Attenuation in dB

20~60dB, DC~18GHz - Outline A

Z: Connector type

Examples:

To order an attenuator, DC-18GHz, N male to N female, 30dB attenuation, specify QFA18K4-18-30-N.

Connector naming rules:

N - N