

# OVB-100

## Optical Variable Backreflector



### Features

- $\pm 0.2$  dB relative accuracy
- $\pm 0.02$  dB repeatability
- 60 dB range
- Available in single-mode or multimode



### Applications

- Transceiver testing
- QA testing
- Laser production



### Compliance

- UL/CSA 61010
- IEC 61010
- FCC Part 15 (Class A)
- EN 61326 (Class A)

## Product Overview

Santec's Optical Variable Backreflector, OVB-100, enables precise backreflection control and superior repeatability. It can be used as a benchtop or rackmount instrument.

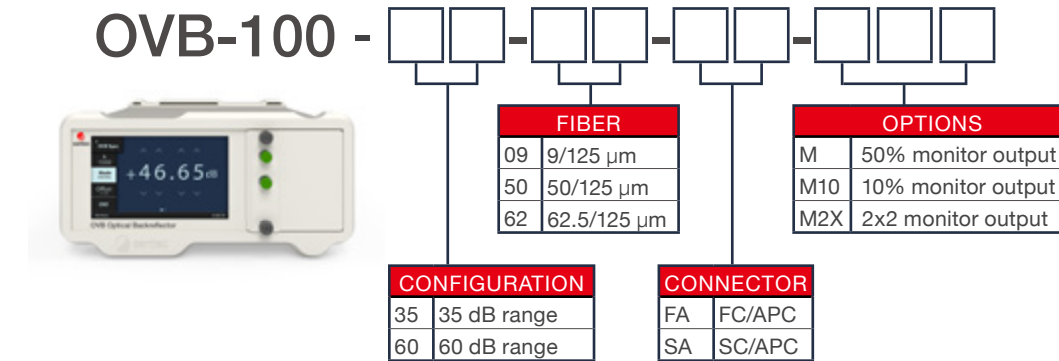
The OVB-100 is ideal for lab and production applications including transceiver testing, QA testing, laser production and automated test systems.

The OVB-100 variable backreflector offers  $\pm 0.02$  dB repeatability and a range of 60 dB in single-mode and 35 dB in multimode. It can be controlled via the front panel touch screen, or remotely via USB and Ethernet.

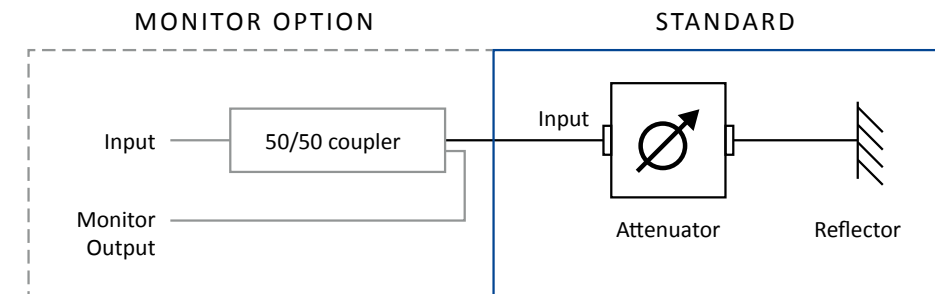
OVB-100 operates from 1200-1700 nm for single-mode and 750-1700 nm for multimode. A 50/50 coupler can be added to bypass the variable backreflector for input signal monitoring.

## Ordering Scheme & Instructions

### 1. Configure OVB Optical Variable Backreflector



### Configuration Options



### 2. Add accessories

#### 2U-Rack-Short-Ear

2U Rack Short Ear



#### 2U-Rack-Long-Ear

2U Rack Long Ear Filler Plate



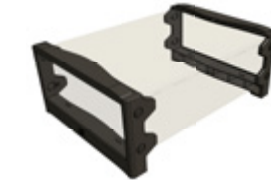
#### 2U-Connector-Plate

2U Chassis Connector Plate



#### 2U-Bezel

2U Rubber Bezels



## OVB Optical / Electrical Specifications

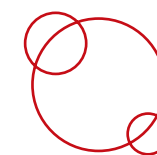
Parameter	Specification	
	Single-mode	Multimode
Fiber Type (um)	9/125	50/125 or 62.5/125
Wavelength Range (nm)	1200 to 1700	750 to 1700
Range (dB)	5 to 60	5 to 35
Range with Monitor Output (dB)	9.5 to 60	9.5 to 35
IL with Monitor Output (dB) <sup>1</sup>	< 4.0	
Resolution (dB)	0.01	
Relative Mode Accuracy (dB)	± 0.2	
Repeatability (dB)	± 0.02	
Maximum Input Power (dBm)	23	
Remote Interface	USB or Ethernet	
Display	5" touch screen	
Input Voltage	100 - 240 V AC, 50 - 60 Hz	
Power Consumption (VA)	60 maximum	

**Notes:**

<sup>1</sup> Excluding connectors

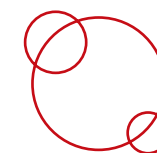
## Mechanical / Environmental Specifications

Parameter	Specification
Unit Dimension W x H x D (cm)	23.5 x 12 x 32.5
Shipping Box Dimensions W x H x D (cm)	36.5 x 39 x 53
Unit Weight (kg)	8
Total Shipment Weight (kg)	9
Operating Temperature (°C)	0 to 55
Storage Temperature (°C)	-40 to 70
Humidity (Non-condensing)	Maximum 95% RH from 0 to 40°C



### Superior Repeatability

±0.2 dB relative accuracy, ±0.02 dB repeatability



### SM or MM available

Standard SM or MM models available



### In the Box

#### OVB-100 - Optical Variable Backreflector

- OVB-100
- AC power cord
- USB-A to USB-B (1.5 m)
- Ethernet cable (1.5 m)



#### Santec Regional Sales Offices

##### SANTEC CORPORATION

5823 Ohkusa-Nenjozaka, Komaki,  
Aichi, 485-0802, Japan  
Tel: +81-568-79-3536 | Fax: +81-568-79-1718

##### Santec Europe Ltd.

99 Park Drive, Milton Park, Abingdon,  
Oxfordshire, OX14 4RY, United Kingdom  
Tel: +44-20-3176-1550

##### SANTEC U.S.A. CORPORATION

433 Hackensack Ave., Hackensack  
NJ, 07601, USA. Toll Free: +1-800-SANTEC1 (726-8321)  
Tel: +1-201-488-5505 | Fax: +1-201-488-7702

##### Santec (Shanghai) Corporation Limited

21F Room H, Hua Du Bldg., No.838 Zhangyang Road  
Pudong District, Shanghai, 200122, China  
Tel: +86-21-5836-1261 | Fax: +86-21-5836-1263

2022© SANTEC CORPORATION Santec reserves the right to make changes in equipment design, components or specifications without notice.  
OVB-100-C-E/Ver.1.0 CODE-202303-MB-KT-CPY