

HVP 1000/200

Voltage amplifier for pulse generation

Concept:

The high voltage pulser **HVP 1000/200** has been designed to drive special Piezocomposite Actuators or other suitable loads with very high charging currents for pulse-wise operation in a kind of "on-off" square-wave mode.

Specials:

The basic principle of the **HVP 1000/200** is the charging of a capacitor ($C \gg 100 \mu\text{F}$) with the necessary voltage. If triggered the capacitor will be disconnected from the power supply and discharged instantly by the Piezocomposite Actuator. A current of **200 A** flows for a short time. The voltage at the Piezocomposite Actuator **increases in a few μs** on the pre-set value.

The Piezocomposite Actuator can be connected via LEMO or laboratory plugs (SLS200). Alternative at the SLS200 plugs an ohmic resistor can be applied to adjust the rise time.



Image: HVP 1000/200

Product highlights:

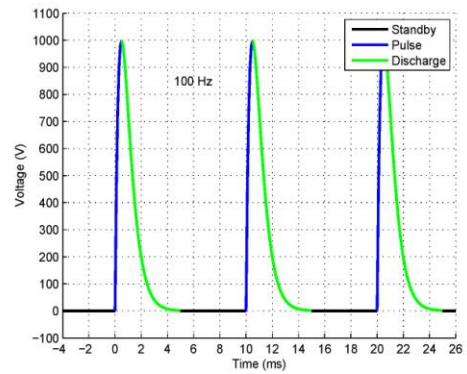
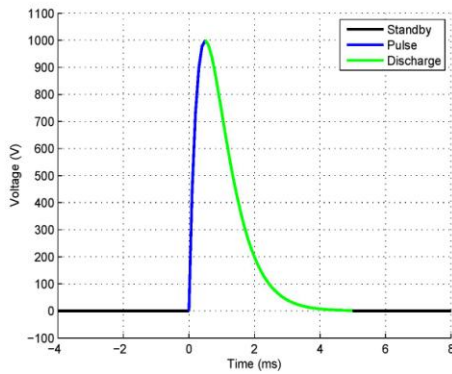
- Very high charging current for shortest rise times
- Alternative ohmic resistor to adjust the rise time

Application examples:

- Material testing
- Calibration of sensors
- Rapid actuation of ultra fast valves

HVP 1000/200

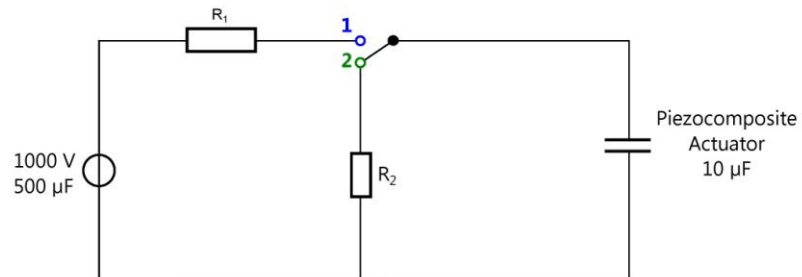
Basic principle of HVP amplifiers



Switch Position

1: Pulse

2: Discharge



phone: +49 (3641) 66880 • fax: +49 (3641) 668866

info@piezोजना.com

<http://www.piezोजना.com/piezोजनाcomposite/>

HVP 1000/200

Technical data

	unit	HVP 1000/200
output		
voltage	V	+40 ... +1000
max. current	A	200
charging resistor	Ω	5
plug	-	LEMO, SLS200
input		
voltage range „extern“	V	0 ... +5
voltage range "MOD.IN"	V	LOW = 0; HIGH = 5
input resistance	kΩ	1
plug	-	BNC
monitor output		
voltage range	V	0 ... +10
plug	-	BNC
voltage supply		
mains voltage	V AC	230 ±10% @50/60 Hz
power switch	-	trigger switch/front panel
fuse	-	2 micro fuses 5x20 anti-surge fuse means 2A integrated into main socket
LED's	-	HV: the high voltage output is activated IL: automated switching off of the voltage output because of overheating or overload
dimensions (w x h x d)	mm/"	260x160x270 / 10.2x6.3x10.6